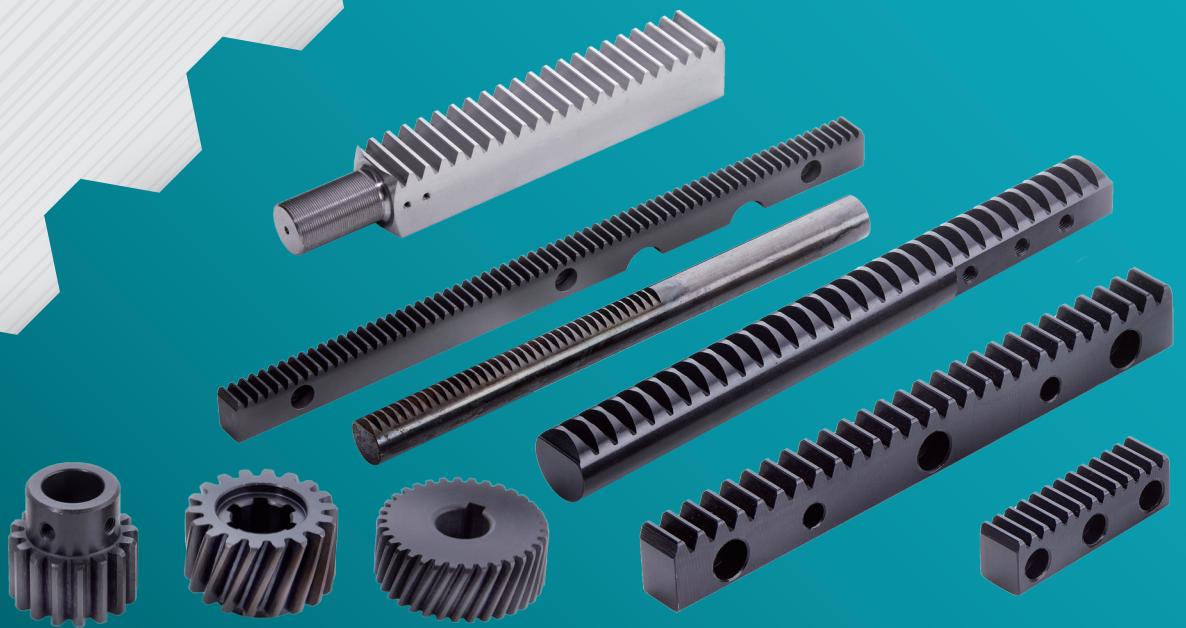




和展傳動工業有限公司
HOJAN TRANSMISSION INDUSTRY CO., LTD



Ground Rack / Gear

www.hojan-ti.com

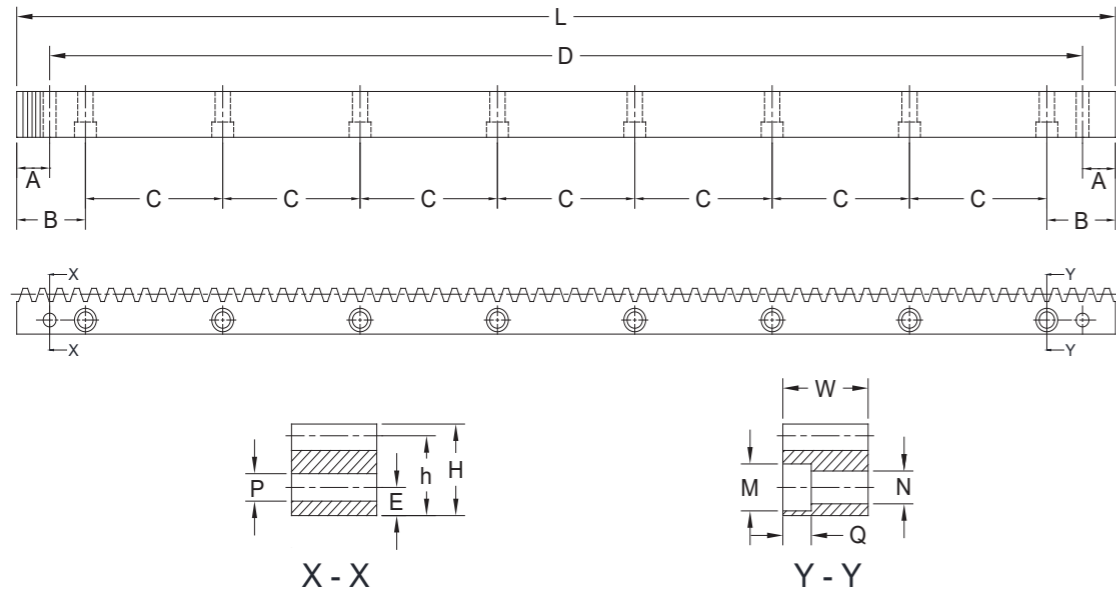
型號說明

C	H	M	H	G
1	2	3	4	5
1 → 材質 MATERIAL		C → S45C M → SCM440		
2 → 齒型 TYPE		S → 直齒 Straight M → 斜齒 Helical		
3 → 齒面處理 TREATMENT OF TOOTH		G → 研磨 Grinding M → 精銑 Finish Cutting		
4 → 熱處理 HEAT TREATMENT		H → 齒面高週波 Tooth Surface Induction Q → 調質 Quenched		
5 → 表面處理 SURFACE TREATMENT		G → 研磨 Grinding		

CONTENT

04 CSGH	
05 CSMH	
06 CSH	16 MSGH
07 CSMHG	17 MSMH
08 CSMQ	18 MSM
09 CSMQG	19 MSMHG
10 CHGH	20 MSMQ
11 CHMH	21 MSMQG
12 CHM	22 MHGH
13 CHMHG	23 MHMH
14 CHMQ	24 MHM
15 CHMQG	25 MHMHG
	26 MHMQ
	27 MHMQG

CSGH

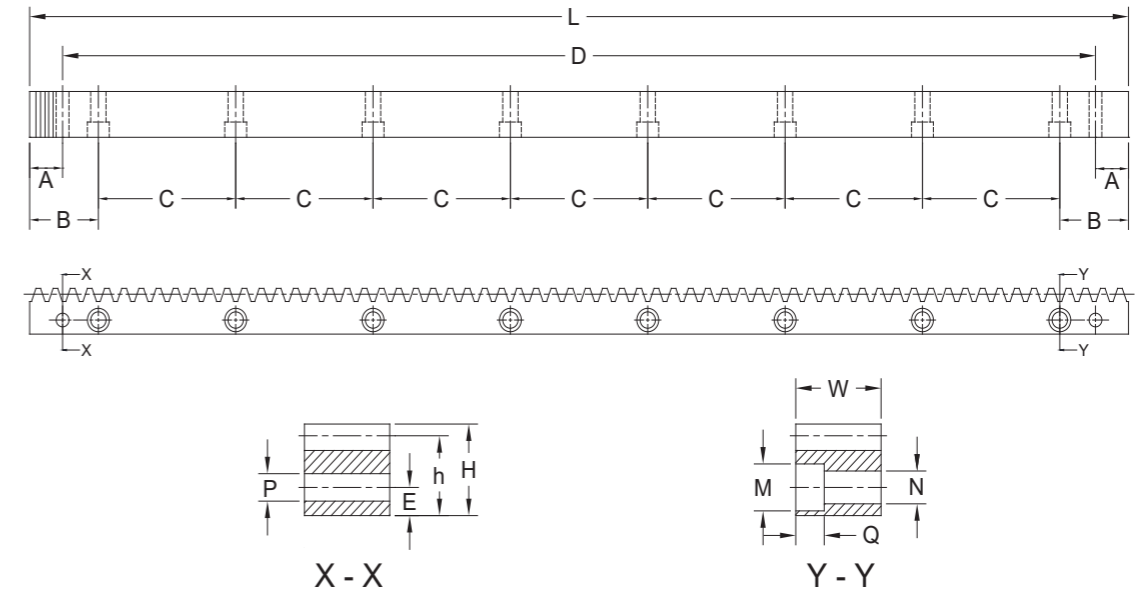


單位Dimension : mm

型號 Code	模數 Modul	L	齒數 Tooth No.	W	H	A	B	C	孔數 Hole No.	P	D	M	N	Q	E	h
CSGH M01505	M1.5	499.51	106	17	17	29	62.44	124.88	4	5.7	441.5	9.5	6	7	8	15.5
CSGH M01510	M1.5	999.03	212	17	17	29	62.44	124.88	8	5.7	941.0	9.5	6	7	8	15.5
CSGH M02005	M2.0	502.64	80	24	24	31.3	62.83	125.66	4	5.7	440.1	11	7	7	8	22
CSGH M02010	M2.0	1005.28	160	24	24	31.3	62.83	125.66	8	5.7	942.7	11	7	7	8	22
CSGH M03005	M3.0	508.95	54	29	29	34.4	63.62	127.23	4	7.7	440.1	15	10	9	9	26
CSGH M03010	M3.0	1017.90	108	29	29	34.4	63.62	127.23	8	7.7	949.1	15	10	9	9	26
CSGH M04005	M4.0	502.64	40	39	39	37.5	62.83	125.66	4	7.7	427.7	15	10	9	12	35
CSGH M04010	M4.0	1005.28	80	39	39	37.5	62.83	125.66	8	7.7	930.3	15	10	9	12	35
CSGH M05005	M5.0	502.65	32	49	39	30.1	62.83	125.66	4	11.7	442.4	20	14	13	12	34
CSGH M05010	M5.0	1005.31	64	49	39	30.1	62.83	125.66	8	11.7	945.0	20	14	13	12	34
CSGH M06005	M6.0	508.95	27	59	49	31.4	63.62	127.23	4	15.7	446.1	26	18	17	16	43
CSGH M06010	M6.0	1017.90	54	59	49	31.4	63.62	127.23	8	15.7	955.0	26	18	17	16	43
CSGH M08005	M8.0	502.64	20	79	79	26.6	62.83	125.66	4	19.7	449.5	33	22	21	25	71
CSGH M08010	M8.0	1005.28	40	79	79	26.6	62.83	125.66	8	19.7	952.0	33	22	21	25	71

材質 Material	S45C	精度等級 Quality grade	< JIS 2級 > < DIN 6 >
齒型 Type	直齒Straight	壓力角 Pressure angle	20°
表面處理 Surface treatment	研磨Grinding	齒面處理 Treatment of tooth	研磨Grinding
熱處理 Heat treatment	齒面高週波Tooth surface induction	齒面硬度 Tooth hardness	HRC 50°~55°

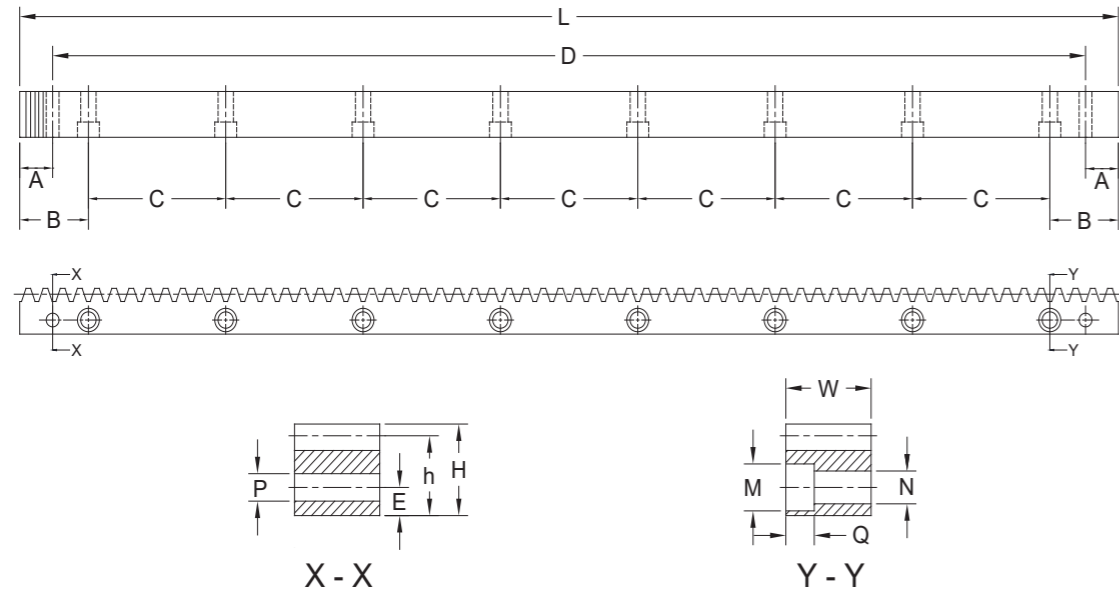
CSMH



單位Dimension : mm

型號 Code	模數 Modul	L	齒數 Tooth No.	W	H	A	B	C	孔數 Hole No.	P	D	M	N	Q	E	h
CSMH M01505	M1.5	499.51	106	17	17	29	62.44	124.88	4	5.7	441.5	9.5	6	7	8	15.5
CSMH M01510	M1.5	999.03	212	17	17	29	62.44	124.88	8	5.7	941.0	9.5	6	7	8	15.5
CSMH M02005	M2.0	502.64	80	24	24	31.3	62.83	125.66	4	5.7	440.1	11	7	7	8	22
CSMH M02010	M2.0	1005.28	160	24	24	31.3	62.83	125.66	8	5.7	942.7	11	7	7	8	22
CSMH M03005	M3.0	508.95	54	29	29	34.4	63.62	127.23	4	7.7	440.1	15	10	9	9	26
CSMH M03010	M3.0	1017.90	108	29	29	34.4	63.62	127.23	8	7.7	949.1	15	10	9	9	26
CSMH M04005	M4.0	502.64	40	39	39	37.5	62.83	125.66	4	7.7	427.7	15	10	9	12	35
CSMH M04010	M4.0	1005.28	80	39	39	37.5	62.83	125.66	8	7.7	930.3	15	10	9	12	35
CSMH M05005	M5.0	502.65	32	49	39	30.1	62.83	125.66	4	11.7	442.4	20	14	13	12	34
CSMH M05010	M5.0	1005.31	64	49	39	30.1	62.83	125.66	8	11.7	945.0	20	14	13	12	34
CSMH M06005	M6.0	508.95	27	59	49	31.4	63.62	127.23	4	15.7	446.1	26	18	17	16	43
CSMH M06010	M6.0	1017.90	54	59	49	31.4	63.62	127.23	8	15.7	955.0	26	18	17	16	43
CSMH M08005	M8.0	502.64	20	79	79	26.6	62.83	125.66	4	19.7	449.5	33	22	21	25	71
CSMH M08010	M8.0	1005.28	40	79	79	26.6	62.83	125.66	8	19.7	952.0	33	22	21	25	71

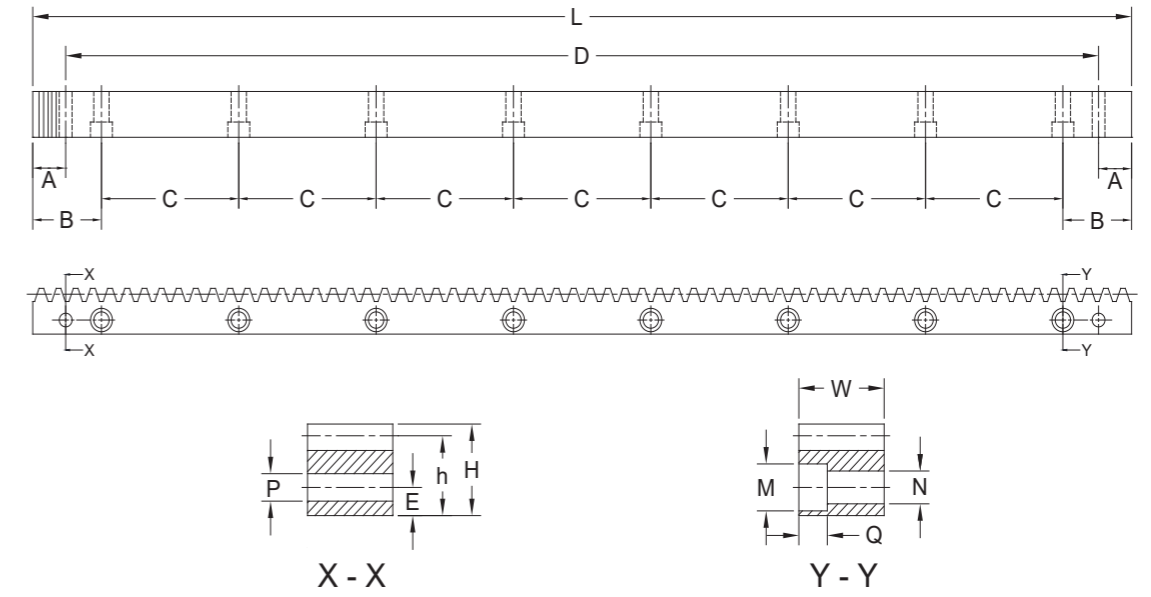
材質 Material	S45C	精度等級 Quality grade	< JIS 6級 > < DIN 10 >
齒型 Type	直齒Straight	壓力角 Pressure angle	20°
表面處理 Surface treatment	精銑Finish cutting	齒面處理 Treatment of tooth	精銑Finish cutting
熱處理 Heat treatment	齒面高週波Tooth surface induction	齒面硬度 Tooth hardness	HRC 50°~55°



單位Dimension : mm

型號 Code	模數 Modul	L	齒數 Tooth No.	W	H	A	B	C	孔數 Hole No.	P	D	M	N	Q	E	h
CSH M01505	M1.5	499.51	106	17	17	29	62.44	124.88	4	5.7	441.5	9.5	6	7	8	15.5
CSH M01510	M1.5	999.03	212	17	17	29	62.44	124.88	8	5.7	941.0	9.5	6	7	8	15.5
CSH M02005	M2.0	502.64	80	24	24	31.3	62.83	125.66	4	5.7	440.1	11	7	7	8	22
CSH M02010	M2.0	1005.28	160	24	24	31.3	62.83	125.66	8	5.7	942.7	11	7	7	8	22
CSH M03005	M3.0	508.95	54	29	29	34.4	63.62	127.23	4	7.7	440.1	15	10	9	9	26
CSH M03010	M3.0	1017.90	108	29	29	34.4	63.62	127.23	8	7.7	949.1	15	10	9	9	26
CSH M04005	M4.0	502.64	40	39	39	37.5	62.83	125.66	4	7.7	427.7	15	10	9	12	35
CSH M04010	M4.0	1005.28	80	39	39	37.5	62.83	125.66	8	7.7	930.3	15	10	9	12	35
CSH M05005	M5.0	502.65	32	49	39	30.1	62.83	125.66	4	11.7	442.4	20	14	13	12	34
CSH M05010	M5.0	1005.31	64	49	39	30.1	62.83	125.66	8	11.7	945.0	20	14	13	12	34
CSH M06005	M6.0	508.95	27	59	49	31.4	63.62	127.23	4	15.7	446.1	26	18	17	16	43
CSH M06010	M6.0	1017.90	54	59	49	31.4	63.62	127.23	8	15.7	955.0	26	18	17	16	43
CSH M08005	M8.0	502.64	20	79	79	26.6	62.83	125.66	4	19.7	449.5	33	22	21	25	71
CSH M08010	M8.0	1005.28	40	79	79	26.6	62.83	125.66	8	19.7	952.0	33	22	21	25	71

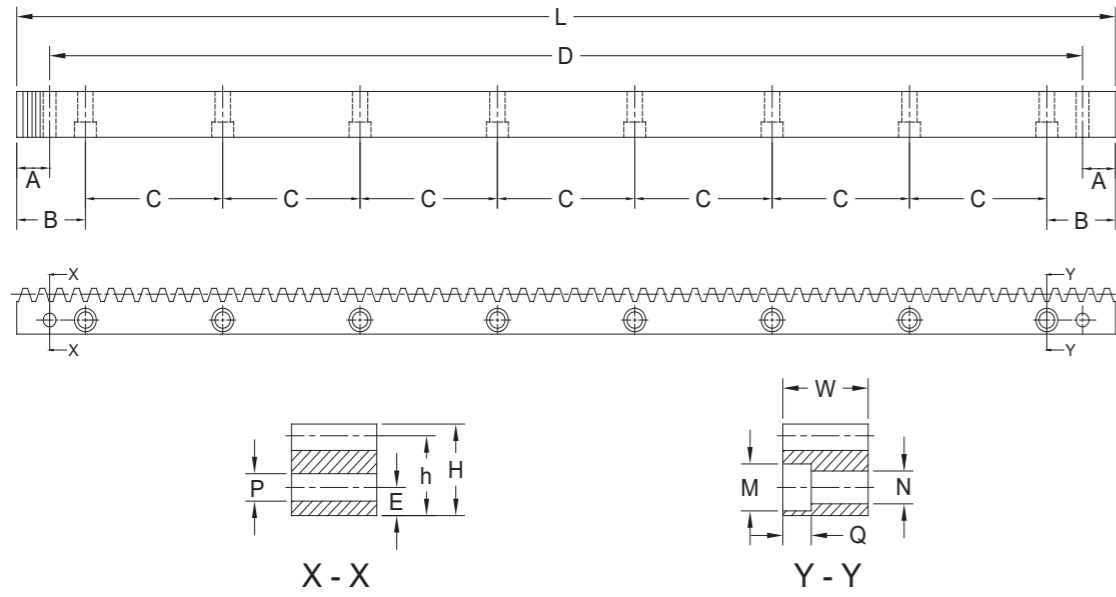
材質 Material	S45C	精度等級 Quality grade	< JIS 5級 > < DIN 9 >
齒型 Type	直齒Straight	壓力角 Pressure angle	20°
表面處理 Surface treatment	精切削Finish cutting	齒面處理 Treatment of tooth	精切削Finish cutting
熱處理 Heat treatment		齒面硬度 Tooth hardness	HRC 15°以下 Less than HRC 15°



單位Dimension : mm

型號 Code	模數 Modul	L	齒數 Tooth No.	W	H	A	B	C	孔數 Hole No.	P	D	M	N	Q	E	h
CSMHG M01505	M1.5	499.51	106	17	17	29	62.44	124.88	4	5.7	441.5	9.5	6	7	8	15.5
CSMHG M01510	M1.5	999.03	212	17	17	29	62.44	124.88	8	5.7	941.0	9.5	6	7	8	15.5
CSMHG M02005	M2.0	502.64	80	24	24	31.3	62.83	125.66	4	5.7	440.1	11	7	7	8	22
CSMHG M02010	M2.0	1005.28	160	24	24	31.3	62.83	125.66	8	5.7	942.7	11	7	7	8	22
CSMHG M03005	M3.0	508.95	54	29	29	34.4	63.62	127.23	4	7.7	440.1	15	10	9	9	26
CSMHG M03010	M3.0	1017.90	108	29	29	34.4	63.62	127.23	8	7.7	949.1	15	10	9	9	26
CSMHG M04005	M4.0	502.64	40	39	39	37.5	62.83	125.66	4	7.7	427.7	15	10	9	12	35
CSMHG M04010	M4.0	1005.28	80	39	39	37.5	62.83	125.66	8	7.7	930.3	15	10	9	12	35
CSMHG M05005	M5.0	502.65	32	49	39	30.1	62.83	125.66	4	11.7	442.4	20	14	13	12	34
CSMHG M05010	M5.0	1005.31	64	49	39	30.1	62.83	125.66	8	11.7	945.0	20	14	13	12	34
CSMHG M06005	M6.0	508.95	27	59	49	31.4	63.62	127.23	4	15.7	446.1	26	18	17	16	43
CSMHG M06010	M6.0	1017.90	54	59	49	31.4	63.62	127.23	8	15.7	955.0	26	18	17	16	43
CSMHG M08005	M8.0	502.64	20	79	79	26.6	62.83	125.66	4	19.7	449.5	33	22	21	25	71
CSMHG M08010	M8.0	1005.28	40	79	79	26.6	62.83	125.66	8	19.7	952.0	33	22	21	25	71

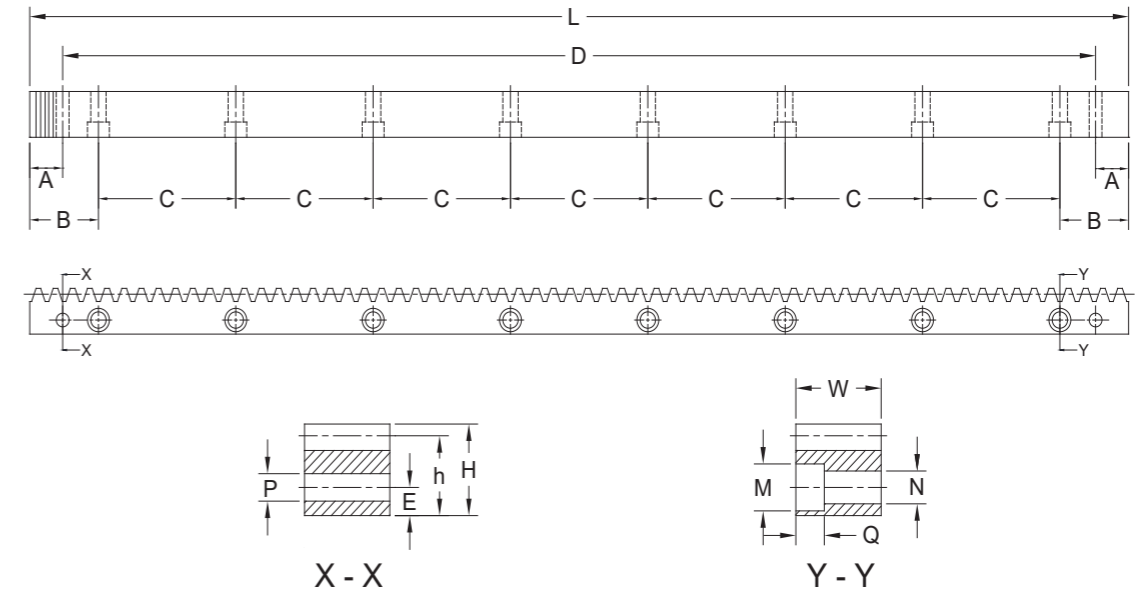
材質 Material	S45C	精度等級 Quality grade	< JIS 5級 > < DIN 9 >
齒型 Type	直齒Straight	壓力角 Pressure angle	20°
表面處理 Surface treatment	研磨Grinding	齒面處理 Treatment of tooth	精切削Finish cutting
熱處理 Heat treatment	齒面高週波Tooth surface induction	齒面硬度 Tooth hardness	HRC 50°~55°



單位Dimension : mm

型號 Code	模數 Modul	L	齒數 Tooth No.	W	H	A	B	C	孔數 Hole No.	P	D	M	N	Q	E	h
CSMQ M01505	M1.5	499.51	106	17	17	29	62.44	124.88	4	5.7	441.5	9.5	6	7	8	15.5
CSMQ M01510	M1.5	999.03	212	17	17	29	62.44	124.88	8	5.7	941.0	9.5	6	7	8	15.5
CSMQ M02005	M2.0	502.64	80	25	24	31.3	62.83	125.66	4	5.7	440.1	11	7	7	8	22
CSMQ M02010	M2.0	1005.28	160	25	24	31.3	62.83	125.66	8	5.7	942.7	11	7	7	8	22
CSMQ M03005	M3.0	508.95	54	30	29	34.4	63.62	127.23	4	7.7	440.1	15	10	9	9	26
CSMQ M03010	M3.0	1017.90	108	30	29	34.4	63.62	127.23	8	7.7	949.1	15	10	9	9	26
CSMQ M04005	M4.0	502.64	40	40	39	37.5	62.83	125.66	4	7.7	427.7	15	10	9	12	35
CSMQ M04010	M4.0	1005.28	80	40	39	37.5	62.83	125.66	8	7.7	930.3	15	10	9	12	35
CSMQ M05005	M5.0	502.65	32	49	39	30.1	62.83	125.66	4	11.7	442.4	20	14	13	12	34
CSMQ M05010	M5.0	1005.31	64	49	39	30.1	62.83	125.66	8	11.7	945.0	20	14	13	12	34
CSMQ M06005	M6.0	508.95	27	59	49	31.4	63.62	127.23	4	15.7	446.1	26	18	17	16	43
CSMQ M06010	M6.0	1017.90	54	59	49	31.4	63.62	127.23	8	15.7	955.0	26	18	17	16	43
CSMQ M08005	M8.0	502.64	20	79	79	26.6	62.83	125.66	4	19.7	449.5	33	22	21	25	71
CSMQ M08010	M8.0	1005.28	40	79	79	26.6	62.83	125.66	8	19.7	952.0	33	22	21	25	71

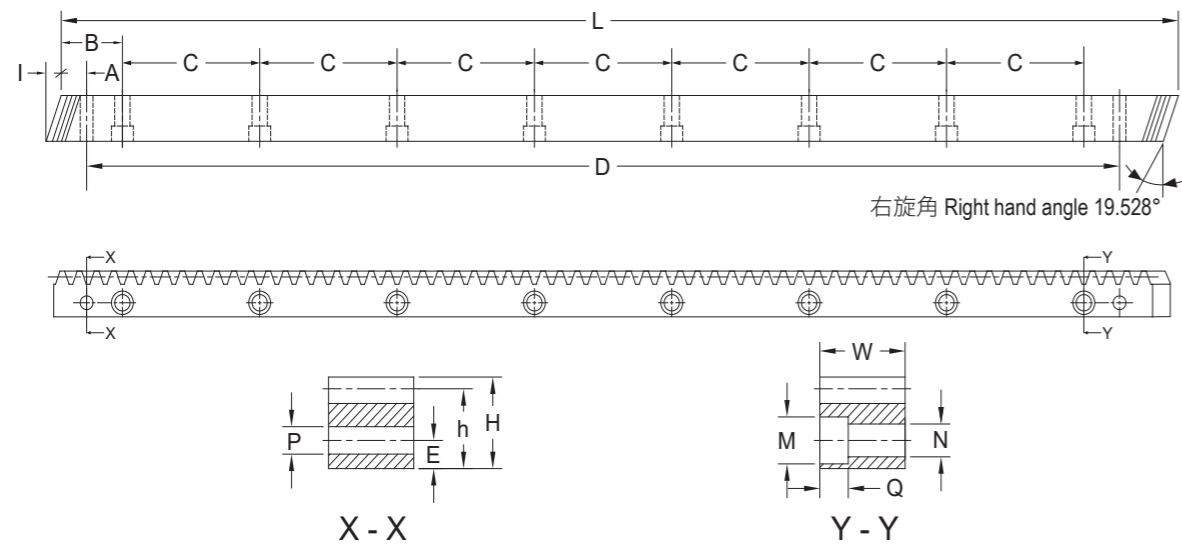
材質 Material	S45C	精度等級 Quality grade	< JIS 4級 > < DIN 8 >
齒型 Type	直齒Straight	壓力角 Pressure angle	20°
表面處理 Surface treatment	精切削Finish cutting	齒面處理 Treatment of tooth	精切削Finish cutting
熱處理 Heat treatment	調質Quenched	齒面硬度 Tooth hardness	HRC 18°~22°



單位Dimension : mm

型號 Code	模數 Modul	L	齒數 Tooth No.	W	H	A	B	C	孔數 Hole No.	P	D	M	N	Q	E	h
CSMQG M01505	M1.5	499.51	106	17	17	29	62.44	124.88	4	5.7	441.5	9.5	6	7	8	15.5
CSMQG M01510	M1.5	999.03	212	17	17	29	62.44	124.88	8	5.7	941.0	9.5	6	7	8	15.5
CSMQG M02005	M2.0	502.64	80	25	24	31.3	62.83	125.66	4	5.7	440.1	11	7	7	8	22
CSMQG M02010	M2.0	1005.28	160	25	24	31.3	62.83	125.66	8	5.7	942.7	11	7	7	8	22
CSMQG M03005	M3.0	508.95	54	30	29	34.4	63.62	127.23	4	7.7	440.1	15	10	9	9	26
CSMQG M03010	M3.0	1017.90	108	30	29	34.4	63.62	127.23	8	7.7	949.1	15	10	9	9	26
CSMQG M04005	M4.0	502.64	40	40	39	37.5	62.83	125.66	4	7.7	427.7	15	10	9	12	35
CSMQG M04010	M4.0	1005.28	80	40	39	37.5	62.83	125.66	8	7.7	930.3	15	10	9	12	35
CSMQG M05005	M5.0	502.65	32	49	39	30.1	62.83	125.66	4	11.7	442.4	20	14	13	12	34
CSMQG M05010	M5.0	1005.31	64	49	39	30.1	62.83	125.66	8	11.7	945.0	20	14	13	12	34
CSMQG M06005	M6.0	508.95	27	59	49	31.4	63.62	127.23	4	15.7	446.1	26	18	17	16	43
CSMQG M06010	M6.0	1017.90	54	59	49	31.4	63.62	127.23	8	15.7	955.0	26	18	17	16	43
CSMQG M08005	M8.0	502.64	20	79	79	26.6	62.83	125.66	4	19.7	449.5	33	22	21	25	71
CSMQG M08010	M8.0	1005.28	40	79	79	26.6	62.83	125.66	8	19.7	952.0	33	22	21	25	71

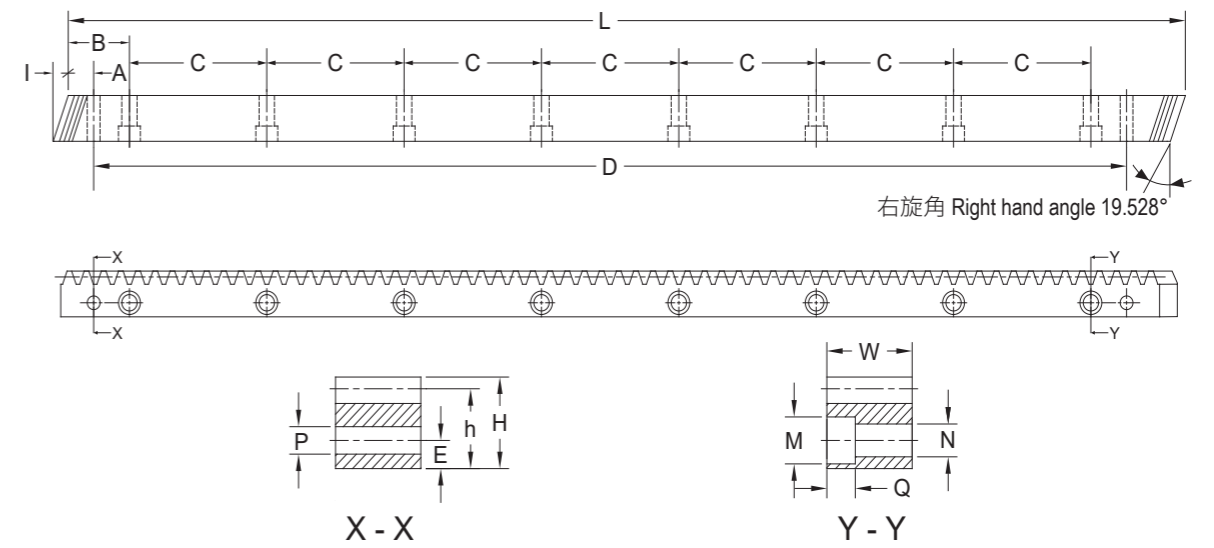
材質 Material	S45C	精度等級 Quality grade	< JIS 3級 > < DIN 7 >
齒型 Type	直齒Straight	壓力角 Pressure angle	20°
表面處理 Surface treatment	研磨Grinding	齒面處理 Treatment of tooth	精切削Finish cutting
熱處理 Heat treatment	調質Quenched	齒面硬度 Tooth hardness	HRC 18°~22°



單位Dimension : mm

型號 Code	模數 Modul	L	I	齒數 Tooth No.	W	H	A	B	C	孔數 Hole No.	P	D	M	N	Q	E	h
CHGH M01505	M1.5	500	6	100	17	17	31.7	62.5	125	4	5.7	436.6	9.5	6	7	8	15.5
CHGH M01510	M1.5	1000	6	200	17	17	31.7	62.5	125	8	5.7	936.6	9.5	6	7	8	15.5
CHGH M02005	M2.0	500	8.5	75	24	24	31.7	62.5	125	4	5.7	436.6	11	7	7	8	22
CHGH M02010	M2.0	1000	8.5	150	24	24	31.7	62.5	125	8	5.7	936.6	11	7	7	8	22
CHGH M03005	M3.0	500	10.3	50	29	29	35.0	62.5	125	4	7.7	430.0	15	10	9	9	26
CHGH M03010	M3.0	1000	10.3	100	29	29	35.0	62.5	125	8	7.7	930.0	15	10	9	9	26
CHGH M04005	M4.0	506.67	13.8	38	39	39	33.3	62.5	125	4	7.7	433.0	15	10	9	12	35
CHGH M04010	M4.0	1000	13.8	75	39	39	33.3	62.5	125	8	7.7	933.4	15	10	9	12	35
CHGH M05005	M5.0	500	17.4	30	49	39	37.5	62.5	125	4	11.7	425.0	20	14	13	12	34
CHGH M05010	M5.0	1000	17.4	60	49	39	37.5	62.5	125	8	11.7	925.0	20	14	13	12	34
CHGH M06005	M6.0	500	20.9	25	59	49	37.5	62.5	125	4	15.7	425.0	26	18	17	16	43
CHGH M06010	M6.0	1000	20.9	50	59	49	37.5	62.5	125	8	15.7	925.0	26	18	17	16	43
CHGH M08005	M8.0	480	28.0	18	79	79	120	60.0	120	4	19.7	240.0	33	22	21	25	71
CHGH M08010	M8.0	960	28.0	36	79	79	120	60.0	120	8	19.7	720.0	33	22	21	25	71

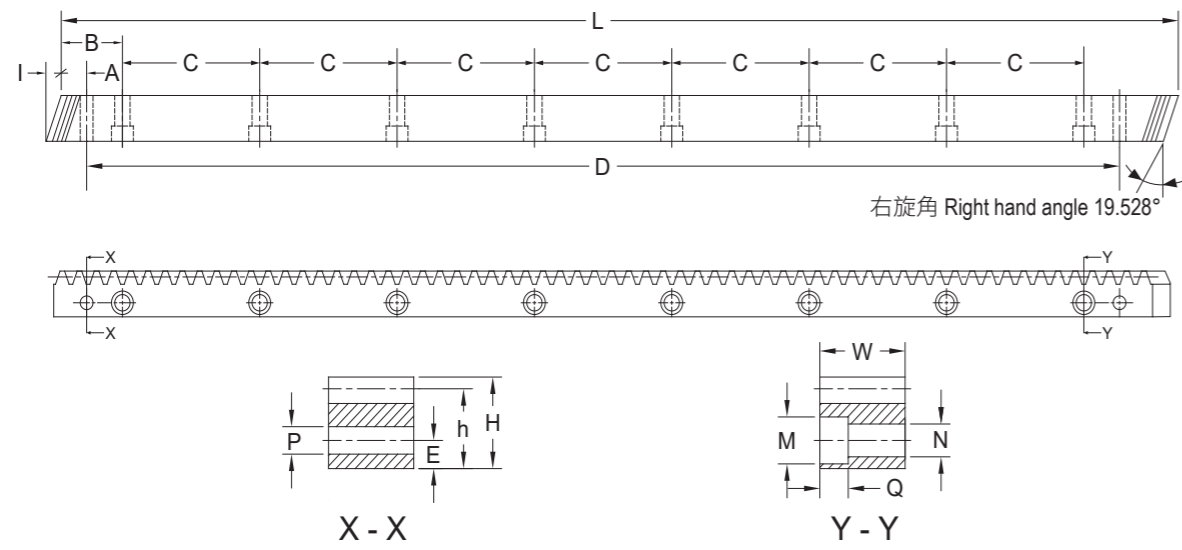
材質 Material	S45C	精度等級 Quality grade	< JIS 2級 > < DIN 6 >
齒型 Type	斜齒Helical	壓力角 Pressure angle	20°
表面處理 Surface treatment	研磨Grinding	齒面處理 Treatment of tooth	研磨Grinding
熱處理 Heat treatment	齒面高週波Tooth surface induction	齒面硬度 Tooth hardness	HRC 50°~55°



單位Dimension : mm

型號 Code	模數 Modul	L	I	齒數 Tooth No.	W	H	A	B	C	孔數 Hole No.	P	D	M	N	Q	E	h
CHMH M01505	M1.5	500	6	100	17	17	31.7	62.5	125	4	5.7	436.6	9.5	6	7	8	15.5
CHMH M01510	M1.5	1000	6	200	17	17	31.7	62.5	125	8	5.7	936.6	9.5	6	7	8	15.5
CHMH M02005	M2.0	500	8.5	75	24	24	31.7	62.5	125	4	5.7	436.6	11	7	7	8	22
CHMH M02010	M2.0	1000	8.5	150	24	24	31.7	62.5	125	8	5.7	936.6	11	7	7	8	22
CHMH M03005	M3.0	500	10.3	50	29	29	35.0	62.5	125	4	7.7	430.0	15	10	9	9	26
CHMH M03010	M3.0	1000	10.3	100	29	29	35.0	62.5	125	8	7.7	930.0	15	10	9	9	26
CHMH M04005	M4.0	506.67	13.8	38	39	39	33.3	62.5	125	4	7.7	433.0	15	10	9	12	35
CHMH M04010	M4.0	1000	13.8	75	39	39	33.3	62.5	125	8	7.7	933.4	15	10	9	12	35
CHMH M05005	M5.0	500	17.4	30	49	39	37.5	62.5	125	4	11.7	425.0	20	14	13	12	34
CHMH M05010	M5.0	1000	17.4	60	49	39	37.5	62.5	125	8	11.7	925.0	20	14	13	12	34
CHMH M06005	M6.0	500	20.9	25	59	49	37.5	62.5	125	4	15.7	425.0	26	18	17	16	43
CHMH M06010	M6.0	1000	20.9	50	59	49	37.5	62.5	125	8	15.7	925.0	26	18	17	16	43
CHMH M08005	M8.0	480	28.0	18	79	79	120	60.0	120	4	19.7	240.0	33	22	21	25	71
CHMH M08010	M8.0	960	28.0	36	79	79	120	60.0	120	8	19.7	720.0	33	22	21	25	71

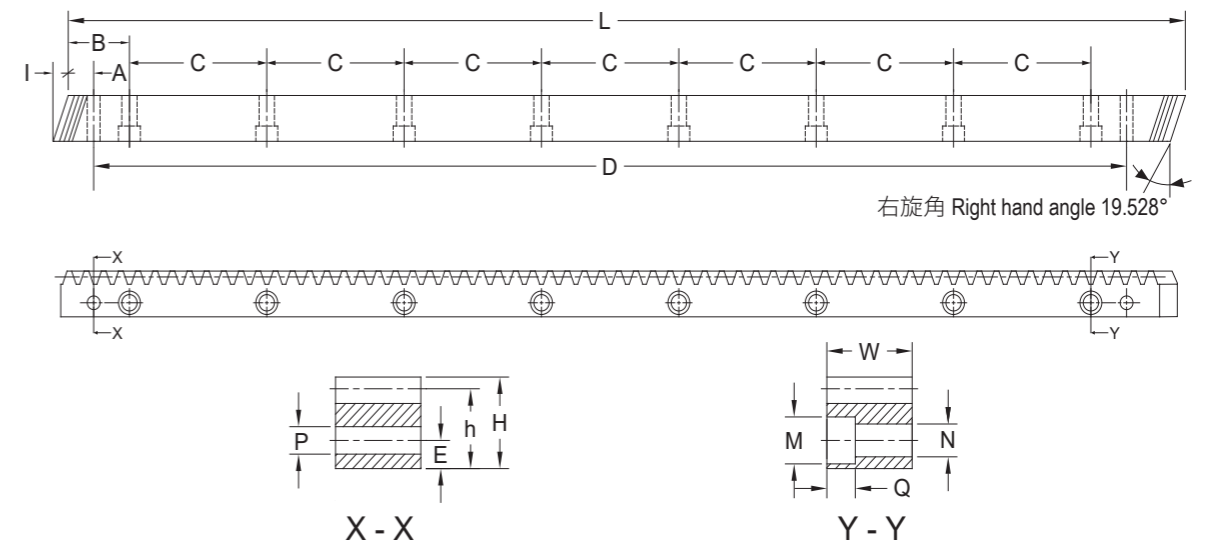
材質 Material	S45C	精度等級 Quality grade	< JIS 6級 > < DIN 10 >
齒型 Type	斜齒Straight	壓力角 Pressure angle	20°
表面處理 Surface treatment	精銑Finish cutting	齒面處理 Treatment of tooth	精銑Finish cutting
熱處理 Heat treatment	齒面高週波Tooth surface induction	齒面硬度 Tooth hardness	HRC 50°~55°



單位Dimension : mm

型號 Code	模數 Modul	L	I	齒數 Tooth No.	W	H	A	B	C	孔數 Hole No.	P	D	M	N	Q	E	h
CHM M01505	M1.5	500	6	100	17	17	31.7	62.5	125	4	5.7	436.6	9.5	6	7	8	15.5
CHM M01510	M1.5	1000	6	200	17	17	31.7	62.5	125	8	5.7	936.6	9.5	6	7	8	15.5
CHM M02005	M2.0	500	8.5	75	24	24	31.7	62.5	125	4	5.7	436.6	11	7	7	8	22
CHM M02010	M2.0	1000	8.5	150	24	24	31.7	62.5	125	8	5.7	936.6	11	7	7	8	22
CHM M03005	M3.0	500	10.3	50	29	29	35.0	62.5	125	4	7.7	430.0	15	10	9	9	26
CHM M03010	M3.0	1000	10.3	100	29	29	35.0	62.5	125	8	7.7	930.0	15	10	9	9	26
CHM M04005	M4.0	506.67	13.8	38	39	39	33.3	62.5	125	4	7.7	433.0	15	10	9	12	35
CHM M04010	M4.0	1000	13.8	75	39	39	33.3	62.5	125	8	7.7	933.4	15	10	9	12	35
CHM M05005	M5.0	500	17.4	30	49	39	37.5	62.5	125	4	11.7	425.0	20	14	13	12	34
CHM M05010	M5.0	1000	17.4	60	49	39	37.5	62.5	125	8	11.7	925.0	20	14	13	12	34
CHM M06005	M6.0	500	20.9	25	59	49	37.5	62.5	125	4	15.7	425.0	26	18	17	16	43
CHM M06010	M6.0	1000	20.9	50	59	49	37.5	62.5	125	8	15.7	925.0	26	18	17	16	43
CHM M08005	M8.0	480	28.0	18	79	79	120	60.0	120	4	19.7	240.0	33	22	21	25	71
CHM M08010	M8.0	960	28.0	36	79	79	120	60.0	120	8	19.7	720.0	33	22	21	25	71

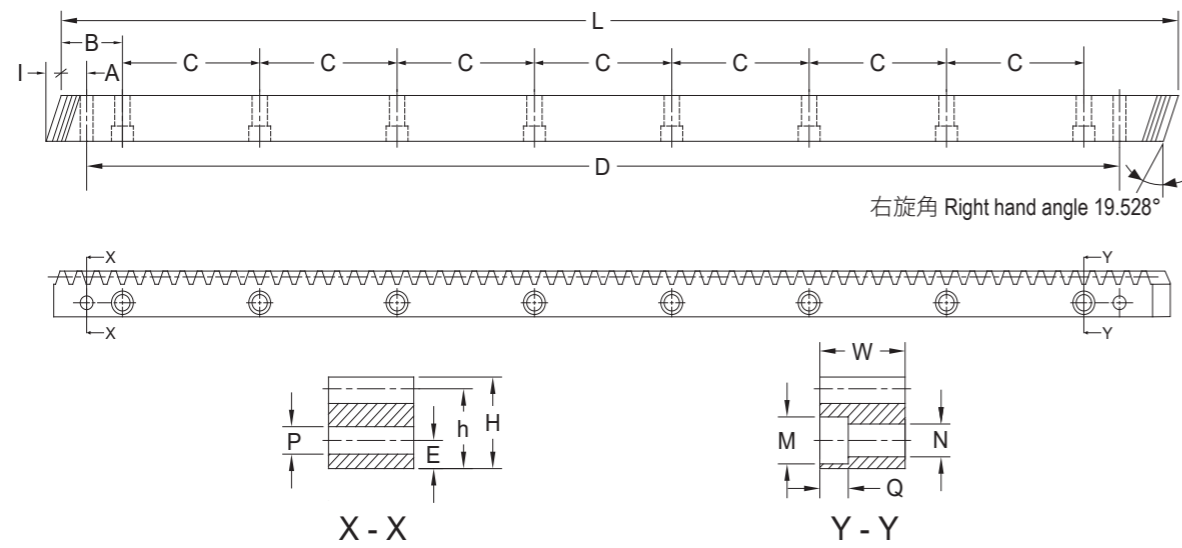
材質 Material	S45C	精度等級 Quality grade	< JIS 5級 > < DIN 9 >
齒型 Type	斜齒Straight	壓力角 Pressure angle	20°
表面處理 Surface treatment	精銑Finish cutting	齒面處理 Treatment of tooth	精銑Finish cutting
熱處理 Heat treatment		齒面硬度 Tooth hardness	HRC 15°以下 Less than HRC 15°



單位Dimension : mm

型號 Code	模數 Modul	L	I	齒數 Tooth No.	W	H	A	B	C	孔數 Hole No.	P	D	M	N	Q	E	h
CHMHG M01505	M1.5	500	6	100	17	17	31.7	62.5	125	4	5.7	436.6	9.5	6	7	8	15.5
CHMHG M01510	M1.5	1000	6	200	17	17	31.7	62.5	125	8	5.7	936.6	9.5	6	7	8	15.5
CHMHG M02005	M2.0	500	8.5	75	24	24	31.7	62.5	125	4	5.7	436.6	11	7	7	8	22
CHMHG M02010	M2.0	1000	8.5	150	24	24	31.7	62.5	125	8	5.7	936.6	11	7	7	8	22
CHMHG M03005	M3.0	500	10.3	50	29	29	35.0	62.5	125	4	7.7	430.0	15	10	9	9	26
CHMHG M03010	M3.0	1000	10.3	100	29	29	35.0	62.5	125	8	7.7	930.0	15	10	9	9	26
CHMHG M04005	M4.0	506.67	13.8	38	39	39	33.3	62.5	125	4	7.7	433.0	15	10	9	12	35
CHMHG M04010	M4.0	1000	13.8	75	39	39	33.3	62.5	125	8	7.7	933.4	15	10	9	12	35
CHMHG M05005	M5.0	500	17.4	30	49	39	37.5	62.5	125	4	11.7	425.0	20	14	13	12	34
CHMHG M05010	M5.0	1000	17.4	60	49	39	37.5	62.5	125	8	11.7	925.0	20	14	13	12	34
CHMHG M06005	M6.0	500	20.9	25	59	49	37.5	62.5	125	4	15.7	425.0	26	18	17	16	43
CHMHG M06010	M6.0	1000	20.9	50	59	49	37.5	62.5	125	8	15.7	925.0	26	18	17	16	43
CHMHG M08005	M8.0	480	28.0	18	79	79	120	60.0	120	4	19.7	240.0	33	22	21	25	71
CHMHG M08010	M8.0	960	28.0	36	79	79	120	60.0	120	8	19.7	720.0	33	22	21	25	71

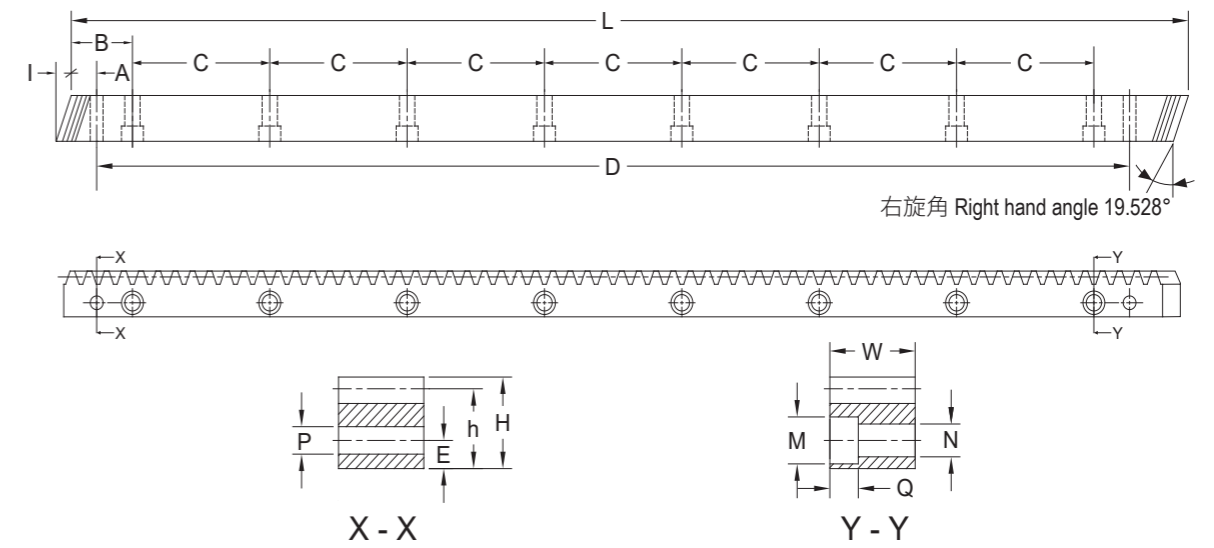
材質 Material	S45C	精度等級 Quality grade	< JIS 5級 > < DIN 9 >
齒型 Type	斜齒Helical	壓力角 Pressure angle	20°
表面處理 Surface treatment	研磨Grinding	齒面處理 Treatment of tooth	精切削Finish cutting
熱處理 Heat treatment	齒面高週波Tooth surface induction	齒面硬度 Tooth hardness	HRC 50°~55°



單位Dimension : mm

型號 Code	模數 Modul	L	I	齒數 Tooth No.	W	H	A	B	C	孔數 Hole No.	P	D	M	N	Q	E	h
CHMQ M01505	M1.5	500	6	100	17	17	31.7	62.5	125	4	5.7	436.6	9.5	6	7	8	15.5
CHMQ M01510	M1.5	1000	6	200	17	17	31.7	62.5	125	8	5.7	936.6	9.5	6	7	8	15.5
CHMQ M02005	M2.0	500	8.5	75	25	24	31.7	62.5	125	4	5.7	436.6	11	7	7	8	22
CHMQ M02010	M2.0	1000	8.5	150	25	24	31.7	62.5	125	8	5.7	936.6	11	7	7	8	22
CHMQ M03005	M3.0	500	10.3	50	30	29	35.0	62.5	125	4	7.7	430.0	15	10	9	9	26
CHMQ M03010	M3.0	1000	10.3	100	30	29	35.0	62.5	125	8	7.7	930.0	15	10	9	9	26
CHMQ M04005	M4.0	506.67	13.8	38	40	39	33.3	62.5	125	4	7.7	433.0	15	10	9	12	35
CHMQ M04010	M4.0	1000	13.8	75	40	39	33.3	62.5	125	8	7.7	933.4	15	10	9	12	35
CHMQ M05005	M5.0	500	17.4	30	49	39	37.5	62.5	125	4	11.7	425.0	20	14	13	12	34
CHMQ M05010	M5.0	1000	17.4	60	49	39	37.5	62.5	125	8	11.7	925.0	20	14	13	12	34
CHMQ M06005	M6.0	500	20.9	25	59	49	37.5	62.5	125	4	15.7	425.0	26	18	17	16	43
CHMQ M06010	M6.0	1000	20.9	50	59	49	37.5	62.5	125	8	15.7	925.0	26	18	17	16	43
CHMQ M08005	M8.0	480	28.0	18	79	79	120	60.0	120	4	19.7	240.0	33	22	21	25	71
CHMQ M08010	M8.0	960	28.0	36	79	79	120	60.0	120	8	19.7	720.0	33	22	21	25	71

材質 Material	S45C	精度等級 Quality grade	< JIS 4級 > < DIN 8 >
齒型 Type	斜齒Helical	壓力角 Pressure angle	20°
表面處理 Surface treatment	精切削Finish cutting	齒面處理 Treatment of tooth	精切削Finish cutting
熱處理 Heat treatment	調質Quenched	齒面硬度 Tooth hardness	HRC 18°~22°

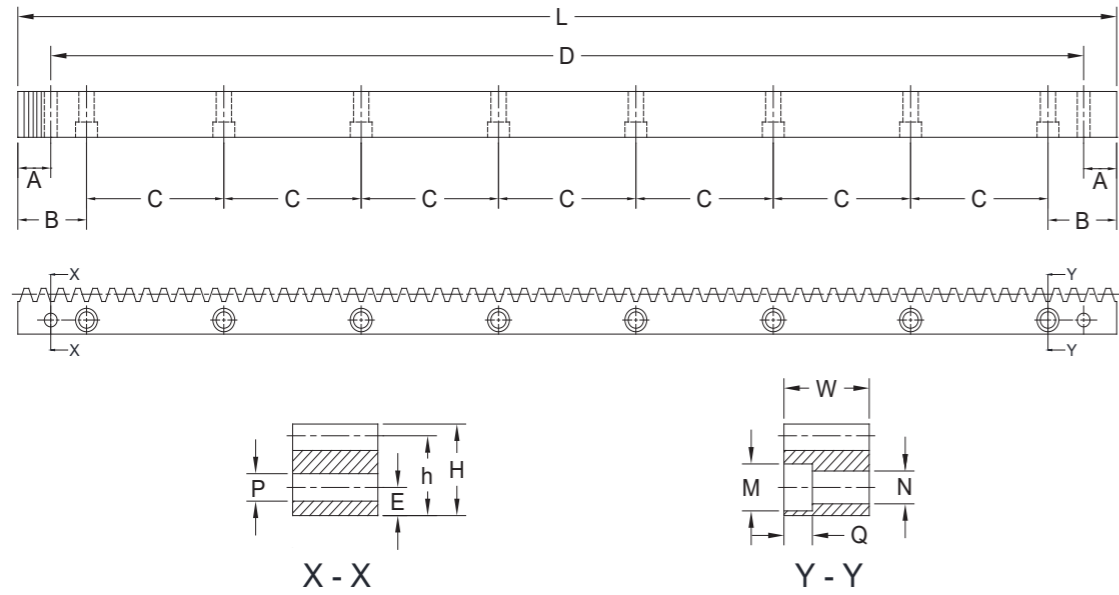


單位Dimension : mm

型號 Code	模數 Modul	L	I	齒數 Tooth No.	W	H	A	B	C	孔數 Hole No.	P	D	M	N	Q	E	h
CHMQG M01505	M1.5	500	6	100	17	17	31.7	62.5	125	4	5.7	436.6	9.5	6	7	8	15.5
CHMQG M01510	M1.5	1000	6	200	17	17	31.7	62.5	125	8	5.7	936.6	9.5	6	7	8	15.5
CHMQG M02005	M2.0	500	8.5	75	25	24	31.7	62.5	125	4	5.7	436.6	11	7	7	8	22
CHMQG M02010	M2.0	1000	8.5	150	25	24	31.7	62.5	125	8	5.7	936.6	11	7	7	8	22
CHMQG M03005	M3.0	500	10.3	50	30	29	35.0	62.5	125	4	7.7	430.0	15	10	9	9	26
CHMQG M03010	M3.0	1000	10.3	100	30	29	35.0	62.5	125	8	7.7	930.0	15	10	9	9	26
CHMQG M04005	M4.0	506.67	13.8	38	40	39	33.3	62.5	125	4	7.7	433.0	15	10	9	12	35
CHMQG M04010	M4.0	1000	13.8	75	40	39	33.3	62.5	125	8	7.7	933.4	15	10	9	12	35
CHMQG M05005	M5.0	500	17.4	30	49	39	37.5	62.5	125	4	11.7	425.0	20	14	13	12	34
CHMQG M05010	M5.0	1000	17.4	60	49	39	37.5	62.5	125	8	11.7	925.0	20	14	13	12	34
CHMQG M06005	M6.0	500	20.9	25	59	49	37.5	62.5	125	4	15.7	425.0	26	18	17	16	43
CHMQG M06010	M6.0	1000	20.9	50	59	49	37.5	62.5	125	8	15.7	925.0	26	18	17	16	43
CHMQG M08005	M8.0	480	28.0	18	79	79	120	60.0	120	4	19.7	240.0	33	22	21	25	71
CHMQG M08010	M8.0	960	28.0	36	79	79	120	60.0	120	8	19.7	720.0	33	22	21	25	71

材質 Material	S45C	精度等級 Quality grade	< JIS 3級 > < DIN 7 >
齒型 Type	斜齒Helical	壓力角 Pressure angle	20°
表面處理 Surface treatment	研磨Grinding	齒面處理 Treatment of tooth	精切削Finish cutting
熱處理 Heat treatment	調質Quenched	齒面硬度 Tooth hardness	HRC 18°~22°

MSGH

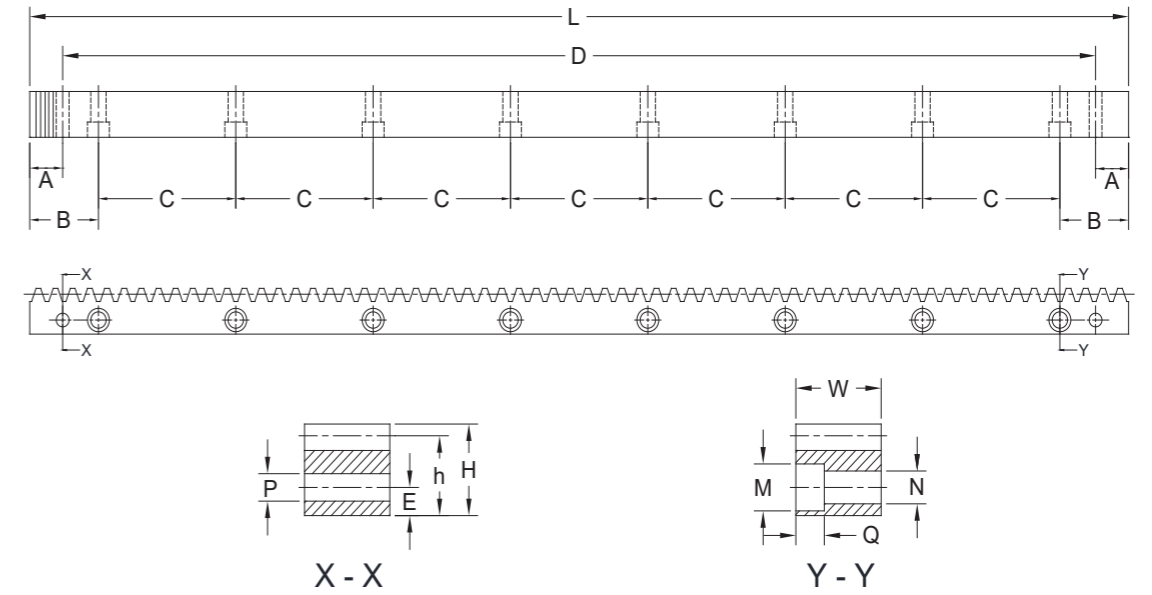


單位Dimension : mm

型號 Code	模數 Modul	L	齒數 Tooth No.	W	H	A	B	C	孔數 Hole No.	P	D	M	N	Q	E	h
MSGH M01505	M1.5	499.51	106	17	17	29	62.44	124.88	4	5.7	441.5	9.5	6	7	8	15.5
MSGH M01510	M1.5	999.03	212	17	17	29	62.44	124.88	8	5.7	941.0	9.5	6	7	8	15.5
MSGH M02005	M2.0	502.64	80	24	24	31.3	62.83	125.66	4	5.7	440.1	11	7	7	8	22
MSGH M02010	M2.0	1005.28	160	24	24	31.3	62.83	125.66	8	5.7	942.7	11	7	7	8	22
MSGH M03005	M3.0	508.95	54	29	29	34.4	63.62	127.23	4	7.7	440.1	15	10	9	9	26
MSGH M03010	M3.0	1017.90	108	29	29	34.4	63.62	127.23	8	7.7	949.1	15	10	9	9	26
MSGH M04005	M4.0	502.64	40	39	39	37.5	62.83	125.66	4	7.7	427.7	15	10	9	12	35
MSGH M04010	M4.0	1005.28	80	39	39	37.5	62.83	125.66	8	7.7	930.3	15	10	9	12	35
MSGH M05005	M5.0	502.65	32	49	39	30.1	62.83	125.66	4	11.7	442.4	20	14	13	12	34
MSGH M05010	M5.0	1005.31	64	49	39	30.1	62.83	125.66	8	11.7	945.0	20	14	13	12	34
MSGH M06005	M6.0	508.95	27	59	49	31.4	63.62	127.23	4	15.7	446.1	26	18	17	16	43
MSGH M06010	M6.0	1017.90	54	59	49	31.4	63.62	127.23	8	15.7	955.0	26	18	17	16	43
MSGH M08005	M8.0	502.64	20	79	79	26.6	62.83	125.66	4	19.7	449.5	33	22	21	25	71
MSGH M08010	M8.0	1005.28	40	79	79	26.6	62.83	125.66	8	19.7	952.0	33	22	21	25	71

材質 Material	紅十字SCM440	精度等級 Quality grade	< JIS 2級 > < DIN 6 >
齒型 Type	直齒Straight	壓力角 Pressure angle	20°
表面處理 Surface treatment	研磨Grinding	齒面處理 Treatment of tooth	研磨Grinding
熱處理 Heat treatment	齒面高週波Tooth surface induction	齒面硬度 Tooth hardness	HRC 50°~55°

MSMH

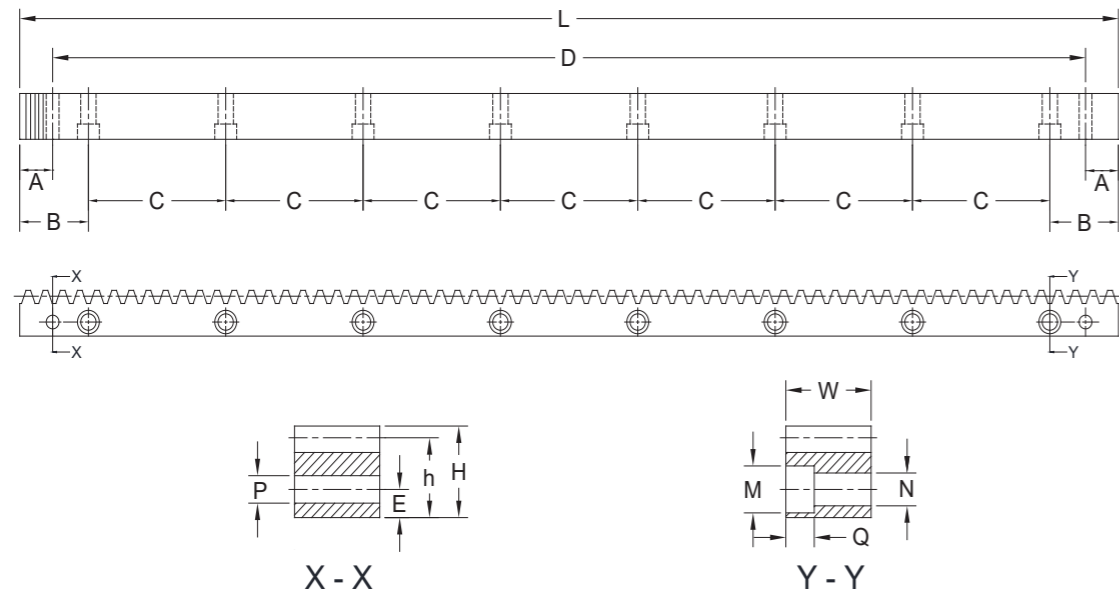


單位Dimension : mm

型號 Code	模數 Modul	L	齒數 Tooth No.	W	H	A	B	C	孔數 Hole No.	P	D	M	N	Q	E	h
MSMH M01505	M1.5	499.51	106	17	17	29	62.44	124.88	4	5.7	441.5	9.5	6	7	8	15.5
MSMH M01510	M1.5	999.03	212	17	17	29	62.44	124.88	8	5.7	941.0	9.5	6	7	8	15.5
MSMH M02005	M2.0	502.64	80	24	24	31.3	62.83	125.66	4	5.7	440.1	11	7	7	8	22
MSMH M02010	M2.0	1005.28	160	24	24	31.3	62.83	125.66	8	5.7	942.7	11	7	7	8	22
MSMH M03005	M3.0	508.95	54	29	29	34.4	63.62	127.23	4	7.7	440.1	15	10	9	9	26
MSMH M03010	M3.0	1017.90	108	29	29	34.4	63.62	127.23	8	7.7	949.1	15	10	9	9	26
MSMH M04005	M4.0	502.64	40	39	39	37.5	62.83	125.66	4	7.7	427.7	15	10	9	12	35
MSMH M04010	M4.0	1005.28	80	39	39	37.5	62.83	125.66	8	7.7	930.3	15	10	9	12	35
MSMH M05005	M5.0	502.65	32	49	39	30.1	62.83	125.66	4	11.7	442.4	20	14	13	12	34
MSMH M05010	M5.0	1005.31	64	49	39	30.1	62.83	125.66	8	11.7	945.0	20	14	13	12	34
MSMH M06005	M6.0	508.95	27	59	49	31.4	63.62	127.23	4	15.7	446.1	26	18	17	16	43
MSMH M06010	M6.0	1017.90	54	59	49	31.4	63.62	127.23	8	15.7	955.0	26	18	17	16	43
MSMH M08005	M8.0	502.64	20	79	79	26.6	62.83	125.66	4	19.7	449.5	33	22	21	25	71
MSMH M08010	M8.0	1005.28	40	79	79	26.6	62.83	125.66	8	19.7	952.0	33	22	21	25	71

材質 Material	紅十字SCM440	精度等級 Quality grade	< JIS 6級 > < DIN 10 >
齒型 Type	直齒Straight	壓力角 Pressure angle	20°
表面處理 Surface treatment	精銑Finish cutting	齒面處理 Treatment of tooth	精銑Finish cutting
熱處理 Heat treatment	齒面高週波Tooth surface induction	齒面硬度 Tooth hardness	HRC 50°~55°

MSM

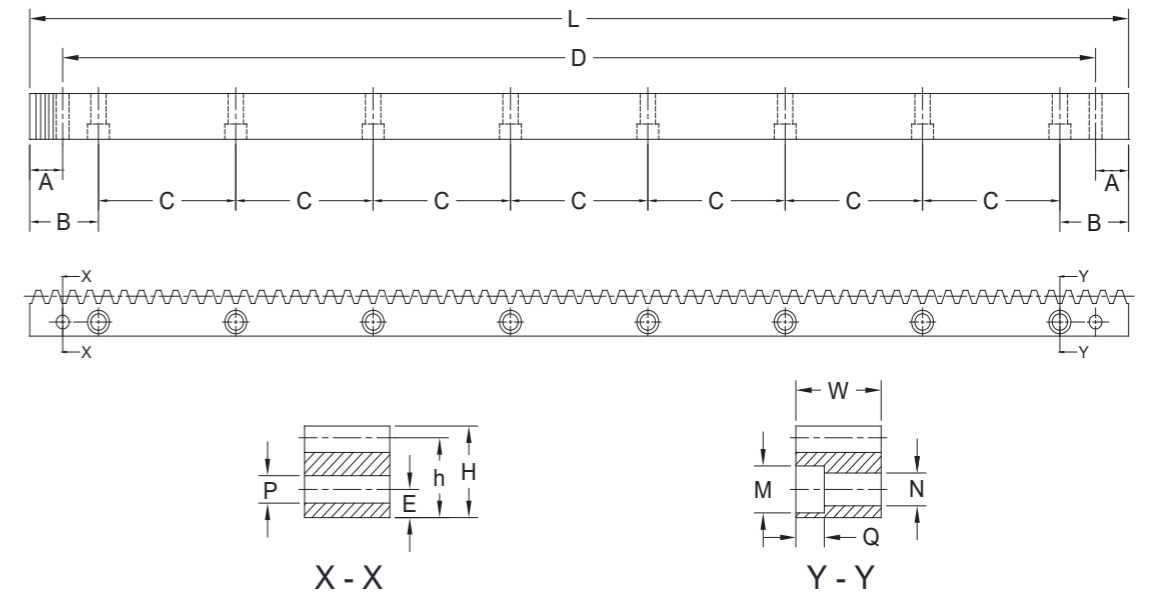


單位Dimension : mm

型號 Code	模數 Modul	L	齒數 Tooth No.	W	H	A	B	C	孔數 Hole No.	P	D	M	N	Q	E	h
MSH M01505	M1.5	499.51	106	17	17	29	62.44	124.88	4	5.7	441.5	9.5	6	7	8	15.5
MSH M01510	M1.5	999.03	212	17	17	29	62.44	124.88	8	5.7	941.0	9.5	6	7	8	15.5
MSH M02005	M2.0	502.64	80	24	24	31.3	62.83	125.66	4	5.7	440.1	11	7	7	8	22
MSH M02010	M2.0	1005.28	160	24	24	31.3	62.83	125.66	8	5.7	942.7	11	7	7	8	22
MSH M03005	M3.0	508.95	54	29	29	34.4	63.62	127.23	4	7.7	440.1	15	10	9	9	26
MSH M03010	M3.0	1017.90	108	29	29	34.4	63.62	127.23	8	7.7	949.1	15	10	9	9	26
MSH M04005	M4.0	502.64	40	39	39	37.5	62.83	125.66	4	7.7	427.7	15	10	9	12	35
MSH M04010	M4.0	1005.28	80	39	39	37.5	62.83	125.66	8	7.7	930.3	15	10	9	12	35
MSH M05005	M5.0	502.65	32	49	39	30.1	62.83	125.66	4	11.7	442.4	20	14	13	12	34
MSH M05010	M5.0	1005.31	64	49	39	30.1	62.83	125.66	8	11.7	945.0	20	14	13	12	34
MSH M06005	M6.0	508.95	27	59	49	31.4	63.62	127.23	4	15.7	446.1	26	18	17	16	43
MSH M06010	M6.0	1017.90	54	59	49	31.4	63.62	127.23	8	15.7	955.0	26	18	17	16	43
MSH M08005	M8.0	502.64	20	79	79	26.6	62.83	125.66	4	19.7	449.5	33	22	21	25	71
MSH M08010	M8.0	1005.28	40	79	79	26.6	62.83	125.66	8	19.7	952.0	33	22	21	25	71

材質 Material	紅十字SCM440	精度等級 Quality grade	< JIS 5級 > < DIN 9 >
齒型 Type	直齒Straight	壓力角 Pressure angle	20°
表面處理 Surface treatment	精切削Finish cutting	齒面處理 Treatment of tooth	精切削Finish cutting
熱處理 Heat treatment		齒面硬度 Tooth hardness	HRC 15°以下 Less than HRC 15°

MSMHG

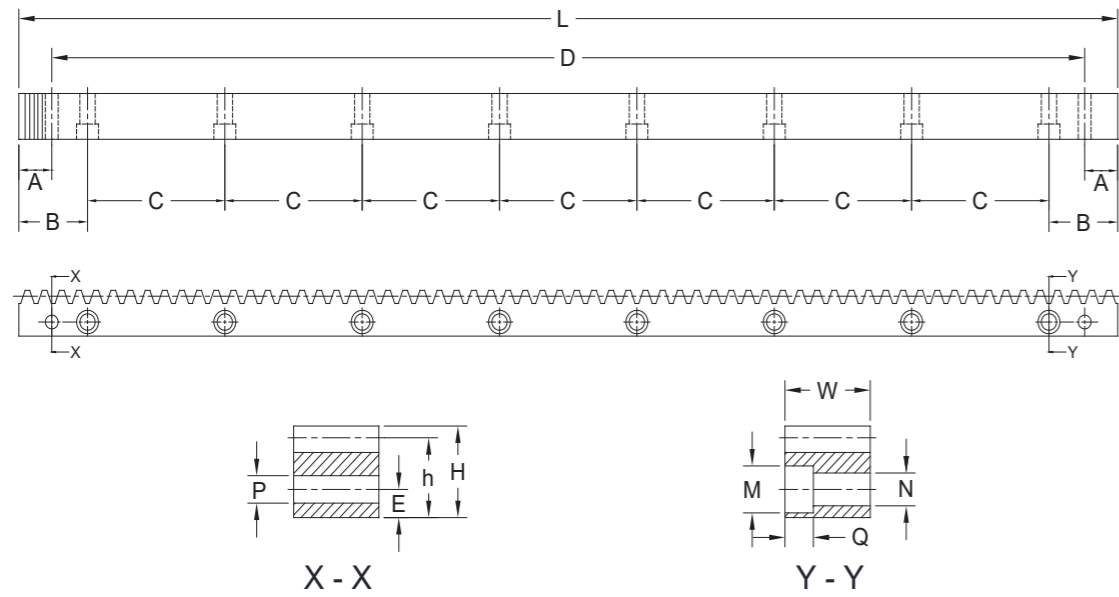


單位Dimension : mm

型號 Code	模數 Modul	L	齒數 Tooth No.	W	H	A	B	C	孔數 Hole No.	P	D	M	N	Q	E	h
MSMHG M01505	M1.5	499.51	106	17	17	29	62.44	124.88	4	5.7	441.5	9.5	6	7	8	15.5
MSMHG M01510	M1.5	999.03	212	17	17	29	62.44	124.88	8	5.7	941.0	9.5	6	7	8	15.5
MSMHG M02005	M2.0	502.64	80	24	24	31.3	62.83	125.66	4	5.7	440.1	11	7	7	8	22
MSMHG M02010	M2.0	1005.28	160	24	24	31.3	62.83	125.66	8	5.7	942.7	11	7	7	8	22
MSMHG M03005	M3.0	508.95	54	29	29	34.4	63.62	127.23	4	7.7	440.1	15	10	9	9	26
MSMHG M03010	M3.0	1017.90	108	29	29	34.4	63.62	127.23	8	7.7	949.1	15	10	9	9	26
MSMHG M04005	M4.0	502.64	40	39	39	37.5	62.83	125.66	4	7.7	427.7	15	10	9	12	35
MSMHG M04010	M4.0	1005.28	80	39	39	37.5	62.83	125.66	8	7.7	930.3	15	10	9	12	35
MSMHG M05005	M5.0	502.65	32	49	39	30.1	62.83	125.66	4	11.7	442.4	20	14	13	12	34
MSMHG M05010	M5.0	1005.31	64	49	39	30.1	62.83	125.66	8	11.7	945.0	20	14	13	12	34
MSMHG M06005	M6.0	508.95	27	59	49	31.4	63.62	127.23	4	15.7	446.1	26	18	17	16	43
MSMHG M06010	M6.0	1017.90	54	59	49	31.4	63.62	127.23	8	15.7	955.0	26	18	17	16	43
MSMHG M08005	M8.0	502.64	20	79	79	26.6	62.83	125.66	4	19.7	449.5	33	22	21	25	71
MSMHG M08010	M8.0	1005.28	40	79	79	26.6	62.83	125.66	8	19.7	952.0	33	22	21	25	71

材質 Material	紅十字SCM440	精度等級 Quality grade	< JIS 5級 > < DIN 9 >
齒型 Type	直齒Straight	壓力角 Pressure angle	20°
表面處理 Surface treatment	研磨Grinding	齒面處理 Treatment of tooth	精切削Finish cutting
熱處理 Heat treatment	齒面高週波Tooth surface induction	齒面硬度 Tooth hardness	HRC 50°~55°

MSMQ

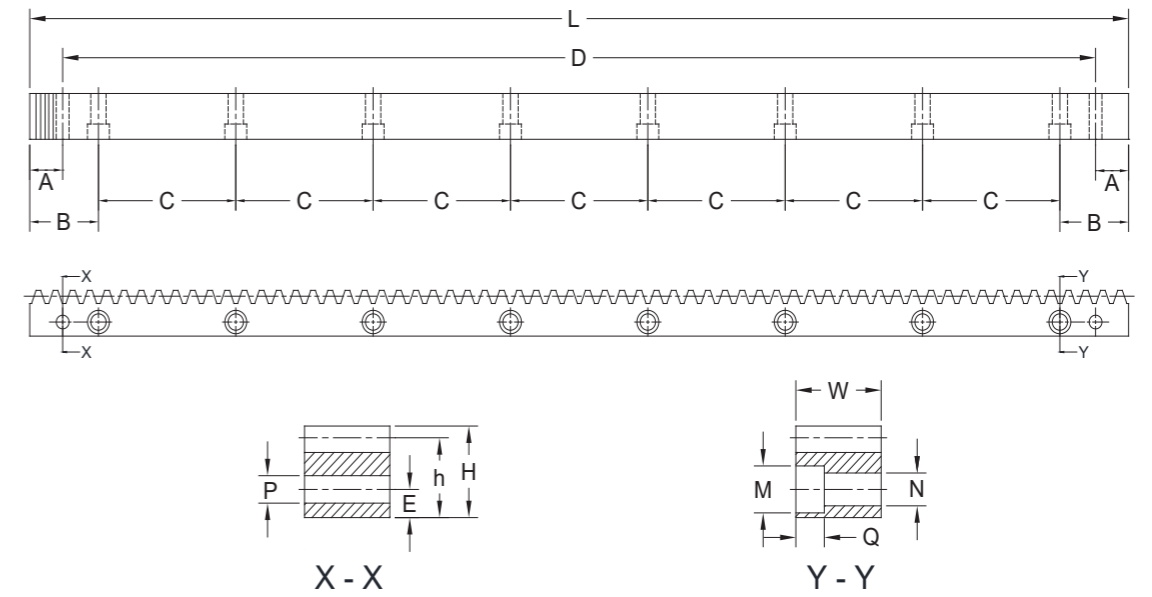


單位Dimension : mm

型號 Code	模數 Modul	L	齒數 Tooth No.	W	H	A	B	C	孔數 Hole No.	P	D	M	N	Q	E	h
MSMQ M01505	M1.5	499.51	106	17	17	29	62.44	124.88	4	5.7	441.5	9.5	6	7	8	15.5
MSMQ M01510	M1.5	999.03	212	17	17	29	62.44	124.88	8	5.7	941.0	9.5	6	7	8	15.5
MSMQ M02005	M2.0	502.64	80	25	24	31.3	62.83	125.66	4	5.7	440.1	11	7	7	8	22
MSMQ M02010	M2.0	1005.28	160	25	24	31.3	62.83	125.66	8	5.7	942.7	11	7	7	8	22
MSMQ M03005	M3.0	508.95	54	30	29	34.4	63.62	127.23	4	7.7	440.1	15	10	9	9	26
MSMQ M03010	M3.0	1017.90	108	30	29	34.4	63.62	127.23	8	7.7	949.1	15	10	9	9	26
MSMQ M04005	M4.0	502.64	40	40	39	37.5	62.83	125.66	4	7.7	427.7	15	10	9	12	35
MSMQ M04010	M4.0	1005.28	80	40	39	37.5	62.83	125.66	8	7.7	930.3	15	10	9	12	35
MSMQ M05005	M5.0	502.65	32	49	39	30.1	62.83	125.66	4	11.7	442.4	20	14	13	12	34
MSMQ M05010	M5.0	1005.31	64	49	39	30.1	62.83	125.66	8	11.7	945.0	20	14	13	12	34
MSMQ M06005	M6.0	508.95	27	59	49	31.4	63.62	127.23	4	15.7	446.1	26	18	17	16	43
MSMQ M06010	M6.0	1017.90	54	59	49	31.4	63.62	127.23	8	15.7	955.0	26	18	17	16	43
MSMQ M08005	M8.0	502.64	20	79	79	26.6	62.83	125.66	4	19.7	449.5	33	22	21	25	71
MSMQ M08010	M8.0	1005.28	40	79	79	26.6	62.83	125.66	8	19.7	952.0	33	22	21	25	71

材質 Material	紅十字SCM440	精度等級 Quality grade	< JIS 4級 > < DIN 8 >
齒型 Type	直齒Straight	壓力角 Pressure angle	20°
表面處理 Surface treatment	精切削Finish cutting	齒面處理 Treatment of tooth	精切削Finish cutting
熱處理 Heat treatment	調質Quenched	齒面硬度 Tooth hardness	HRC 18°~22°

MSMQG

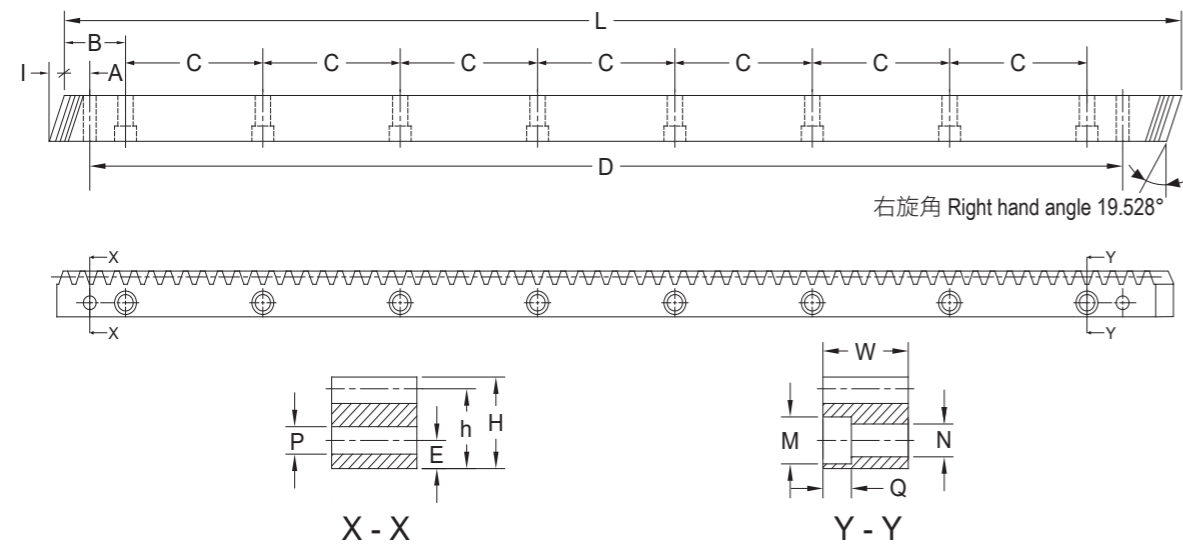


單位Dimension : mm

型號 Code	模數 Modul	L	齒數 Tooth No.	W	H	A	B	C	孔數 Hole No.	P	D	M	N	Q	E	h
MSMQG M01505	M1.5	499.51	106	17	17	29	62.44	124.88	4	5.7	441.5	9.5	6	7	8	15.5
MSMQG M01510	M1.5	999.03	212	17	17	29	62.44	124.88	8	5.7	941.0	9.5	6	7	8	15.5
MSMQG M02005	M2.0	502.64	80	25	24	31.3	62.83	125.66	4	5.7	440.1	11	7	7	8	22
MSMQG M02010	M2.0	1005.28	160	25	24	31.3	62.83	125.66	8	5.7	942.7	11	7	7	8	22
MSMQG M03005	M3.0	508.95	54	30	29	34.4	63.62	127.23	4	7.7	440.1	15	10	9	9	26
MSMQG M03010	M3.0	1017.90	108	30	29	34.4	63.62	127.23	8	7.7	949.1	15	10	9	9	26
MSMQG M04005	M4.0	502.64	40	40	39	37.5	62.83	125.66	4	7.7	427.7	15	10	9	12	35
MSMQG M04010	M4.0	1005.28	80	40	39	37.5	62.83	125.66	8	7.7	930.3	15	10	9	12	35
MSMQG M05005	M5.0	502.65	32	49	39	30.1	62.83	125.66	4	11.7	442.4	20	14	13	12	34
MSMQG M05010	M5.0	1005.31	64	49	39	30.1	62.83	125.66	8	11.7	945.0	20	14	13	12	34
MSMQG M06005	M6.0	508.95	27	59	49	31.4	63.62	127.23	4	15.7	446.1	26	18	17	16	43
MSMQG M06010	M6.0	1017.90	54	59	49	31.4	63.62	127.23	8	15.7	955.0	26	18	17	16	43
MSMQG M08005	M8.0	502.64	20	79	79	26.6	62.83	125.66	4	19.7	449.5	33	22	21	25	71
MSMQG M08010	M8.0	1005.28	40	79	79	26.6	62.83	125.66	8	19.7	952.0	33	22	21	25	71

材質 Material	SCM440	精度等級 Quality grade	< JIS 3級 > < DIN 7 >
齒型 Type	直齒Straight	壓力角 Pressure angle	20°
表面處理 Surface treatment	研磨Grinding	齒面處理 Treatment of tooth	精切削Finish cutting
熱處理 Heat treatment	調質Quenched	齒面硬度 Tooth hardness	HRC 18°~22°

MHGH

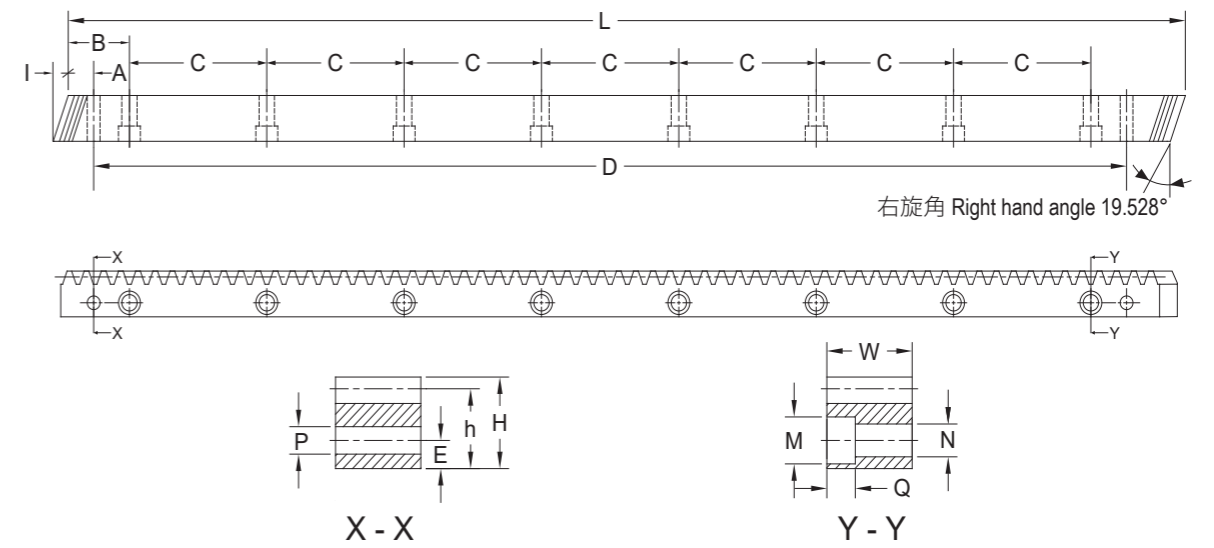


單位Dimension : mm

型號 Code	模數 Modul	L	I	齒數 Tooth No.	W	H	A	B	C	孔數 Hole No.	P	D	M	N	Q	E	h
MHGH M01505	M1.5	500	6	100	17	17	31.7	62.5	125	4	5.7	436.6	9.5	6	7	8	15.5
MHGH M01510	M1.5	1000	6	200	17	17	31.7	62.5	125	8	5.7	936.6	9.5	6	7	8	15.5
MHGH M02005	M2.0	500	8.5	75	24	24	31.7	62.5	125	4	5.7	436.6	11	7	7	8	22
MHGH M02010	M2.0	1000	8.5	150	24	24	31.7	62.5	125	8	5.7	936.6	11	7	7	8	22
MHGH M03005	M3.0	500	10.3	50	29	29	35.0	62.5	125	4	7.7	430.0	15	10	9	9	26
MHGH M03010	M3.0	1000	10.3	100	29	29	35.0	62.5	125	8	7.7	930.0	15	10	9	9	26
MHGH M04005	M4.0	506.67	13.8	38	39	39	33.3	62.5	125	4	7.7	433.0	15	10	9	12	35
MHGH M04010	M4.0	1000	13.8	75	39	39	33.3	62.5	125	8	7.7	933.4	15	10	9	12	35
MHGH M05005	M5.0	500	17.4	30	49	39	37.5	62.5	125	4	11.7	425.0	20	14	13	12	34
MHGH M05010	M5.0	1000	17.4	60	49	39	37.5	62.5	125	8	11.7	925.0	20	14	13	12	34
MHGH M06005	M6.0	500	20.9	25	59	49	37.5	62.5	125	4	15.7	425.0	26	18	17	16	43
MHGH M06010	M6.0	1000	20.9	50	59	49	37.5	62.5	125	8	15.7	925.0	26	18	17	16	43
MHGH M08005	M8.0	480	28.0	18	79	79	120	60.0	120	4	19.7	240.0	33	22	21	25	71
MHGH M08010	M8.0	960	28.0	36	79	79	120	60.0	120	8	19.7	720.0	33	22	21	25	71

材質 Material	紅十字SCM440	精度等級 Quality grade	< JIS 2級 > < DIN 6 >
齒型 Type	斜齒Helical	壓力角 Pressure angle	20°
表面處理 Surface treatment	研磨Grinding	齒面處理 Treatment of tooth	研磨Grinding
熱處理 Heat treatment	齒面高週波Tooth surface induction	齒面硬度 Tooth hardness	HRC 50°~55°

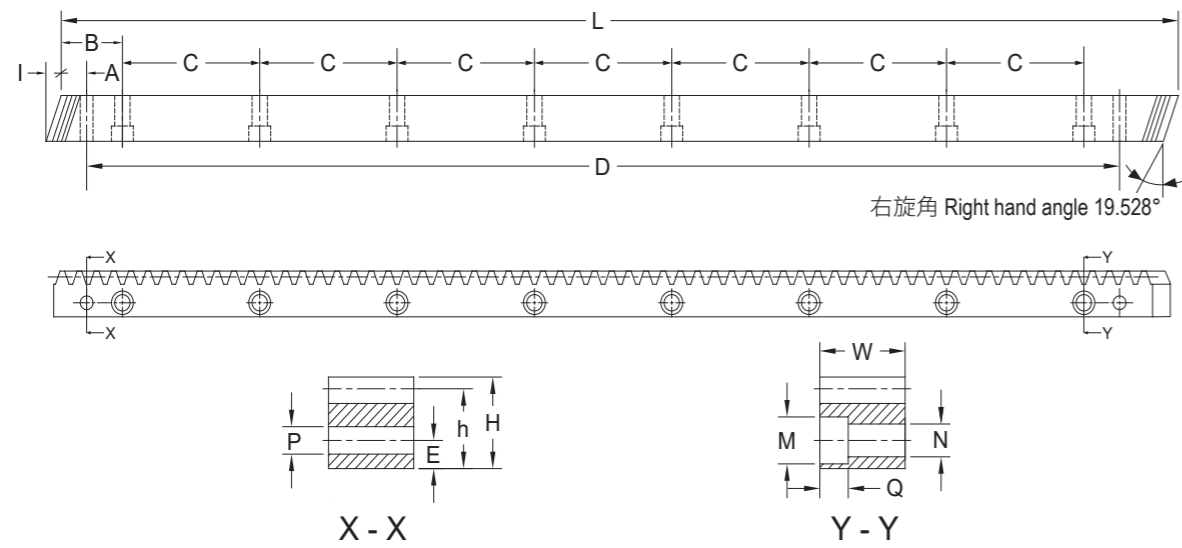
MHMH



單位Dimension : mm

型號 Code	模數 Modul	L	I	齒數 Tooth No.	W	H	A	B	C	孔數 Hole No.	P	D	M	N	Q	E	h
MHMH M01505	M1.5	500	6	100	17	17	31.7	62.5	125	4	5.7	436.6	9.5	6	7	8	15.5
MHMH M01510	M1.5	1000	6	200	17	17	31.7	62.5	125	8	5.7	936.6	9.5	6	7	8	15.5
MHMH M02005	M2.0	500	8.5	75	24	24	31.7	62.5	125	4	5.7	436.6	11	7	7	8	22
MHMH M02010	M2.0	1000	8.5	150	24	24	31.7	62.5	125	8	5.7	936.6	11	7	7	8	22
MHMH M03005	M3.0	500	10.3	50	29	29	35.0	62.5	125	4	7.7	430.0	15	10	9	9	26
MHMH M03010	M3.0	1000	10.3	100	29	29	35.0	62.5	125	8	7.7	930.0	15	10	9	9	26
MHMH M04005	M4.0	506.67	13.8	38	39	39	33.3	62.5	125	4	7.7	433.0	15	10	9	12	35
MHMH M04010	M4.0	1000	13.8	75	39	39	33.3	62.5	125	8	7.7	933.4	15	10	9	12	35
MHMH M05005	M5.0	500	17.4	30	49	39	37.5	62.5	125	4	11.7	425.0	20	14	13	12	34
MHMH M05010	M5.0	1000	17.4	60	49	39	37.5	62.5	125	8	11.7	925.0	20	14	13	12	34
MHMH M06005	M6.0	500	20.9	25	59	49	37.5	62.5	125	4	15.7	425.0	26	18	17	16	43
MHMH M06010	M6.0	1000	20.9	50	59	49	37.5	62.5	125	8	15.7	925.0	26	18	17	16	43
MHMH M08005	M8.0	480	28.0	18	79	79	120	60.0	120	4	19.7	240.0	33	22	21	25	71
MHMH M08010	M8.0	960	28.0	36	79	79	120	60.0	120	8	19.7	720.0	33	22	21	25	71

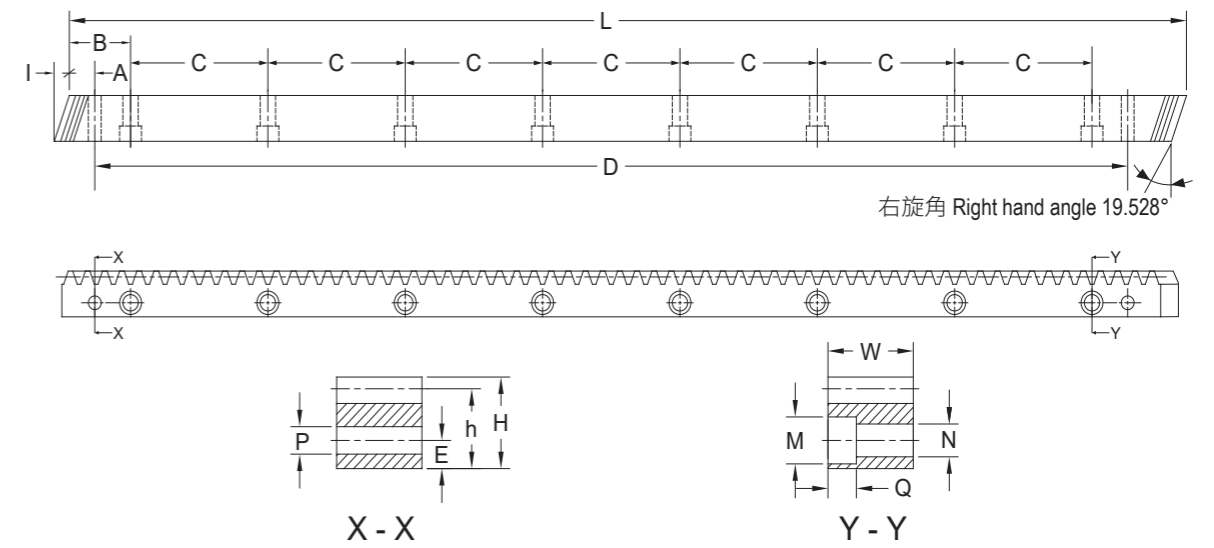
材質 Material	紅十字SCM440	精度等級 Quality grade	< JIS 6級 > < DIN 10 >
齒型 Type	斜齒Helical	壓力角 Pressure angle	20°
表面處理 Surface treatment	精銑Finish cutting	齒面處理 Treatment of tooth	精銑Finish cutting
熱處理 Heat treatment	齒面高週波Tooth surface induction	齒面硬度 Tooth hardness	HRC 50°~55°



單位Dimension : mm

型號 Code	模數 Modul	L	I	齒數 Tooth No.	W	H	A	B	C	孔數 Hole No.	P	D	M	N	Q	E	h
MHM M01505	M1.5	500	6	100	17	17	31.7	62.5	125	4	5.7	436.6	9.5	6	7	8	15.5
MHM M01510	M1.5	1000	6	200	17	17	31.7	62.5	125	8	5.7	936.6	9.5	6	7	8	15.5
MHM M02005	M2.0	500	8.5	75	24	24	31.7	62.5	125	4	5.7	436.6	11	7	7	8	22
MHM M02010	M2.0	1000	8.5	150	24	24	31.7	62.5	125	8	5.7	936.6	11	7	7	8	22
MHM M03005	M3.0	500	10.3	50	29	29	35.0	62.5	125	4	7.7	430.0	15	10	9	9	26
MHM M03010	M3.0	1000	10.3	100	29	29	35.0	62.5	125	8	7.7	930.0	15	10	9	9	26
MHM M04005	M4.0	506.67	13.8	38	39	39	33.3	62.5	125	4	7.7	433.0	15	10	9	12	35
MHM M04010	M4.0	1000	13.8	75	39	39	33.3	62.5	125	8	7.7	933.4	15	10	9	12	35
MHM M05005	M5.0	500	17.4	30	49	39	37.5	62.5	125	4	11.7	425.0	20	14	13	12	34
MHM M05010	M5.0	1000	17.4	60	49	39	37.5	62.5	125	8	11.7	925.0	20	14	13	12	34
MHM M06005	M6.0	500	20.9	25	59	49	37.5	62.5	125	4	15.7	425.0	26	18	17	16	43
MHM M06010	M6.0	1000	20.9	50	59	49	37.5	62.5	125	8	15.7	925.0	26	18	17	16	43
MHM M08005	M8.0	480	28.0	18	79	79	120	60.0	120	4	19.7	240.0	33	22	21	25	71
MHM M08010	M8.0	960	28.0	36	79	79	120	60.0	120	8	19.7	720.0	33	22	21	25	71

材質 Material	紅十字SCM440	精度等級 Quality grade	< JIS 5級 > < DIN 9 >
齒型 Type	斜齒Helical	壓力角 Pressure angle	20°
表面處理 Surface treatment	精銑Finish cutting	齒面處理 Treatment of tooth	精銑Finish cutting
熱處理 Heat treatment		齒面硬度 Tooth hardness	HRC 15°以下 Less than HRC 15

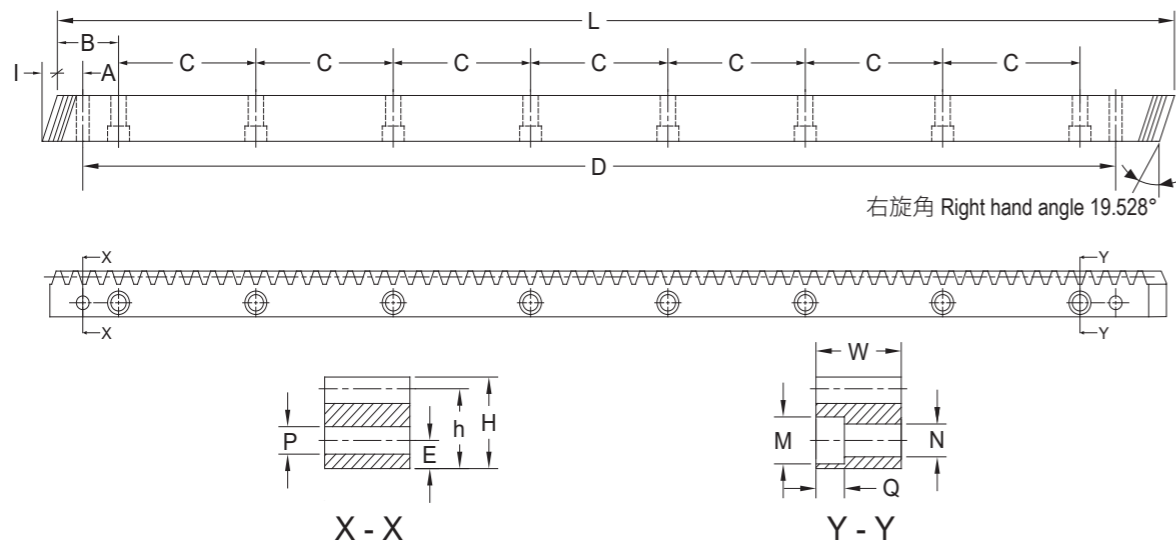


單位Dimension : mm

型號 Code	模數 Modul	L	I	齒數 Tooth No.	W	H	A	B	C	孔數 Hole No.	P	D	M	N	Q	E	h
MHMHG M01505	M1.5	500	6	100	17	17	31.7	62.5	125	4	5.7	436.6	9.5	6	7	8	15.5
MHMHG M01510	M1.5	1000	6	200	17	17	31.7	62.5	125	8	5.7	936.6	9.5	6	7	8	15.5
MHMHG M02005	M2.0	500	8.5	75	24	24	31.7	62.5	125	4	5.7	436.6	11	7	7	8	22
MHMHG M02010	M2.0	1000	8.5	150	24	24	31.7	62.5	125	8	5.7	936.6	11	7	7	8	22
MHMHG M03005	M3.0	500	10.3	50	29	29	35.0	62.5	125	4	7.7	430.0	15	10	9	9	26
MHMHG M03010	M3.0	1000	10.3	100	29	29	35.0	62.5	125	8	7.7	930.0	15	10	9	9	26
MHMHG M04005	M4.0	506.67	13.8	38	39	39	33.3	62.5	125	4	7.7	433.0	15	10	9	12	35
MHMHG M04010	M4.0	1000	13.8	75	39	39	33.3	62.5	125	8	7.7	933.4	15	10	9	12	35
MHMHG M05005	M5.0	500	17.4	30	49	39	37.5	62.5	125	4	11.7	425.0	20	14	13	12	34
MHMHG M05010	M5.0	1000	17.4	60	49	39	37.5	62.5	125	8	11.7	925.0	20	14	13	12	34
MHMHG M06005	M6.0	500	20.9	25	59	49	37.5	62.5	125	4	15.7	425.0	26	18	17	16	43
MHMHG M06010	M6.0	1000	20.9	50	59	49	37.5	62.5	125	8	15.7	925.0	26	18	17	16	43
MHMHG M08005	M8.0	480	28.0	18	79	79	120	60.0	120	4	19.7	240.0	33	22	21	25	71
MHMHG M08010	M8.0	960	28.0	36	79	79	120	60.0	120	8	19.7	720.0	33	22	21	25	71

材質 Material	紅十字SCM440	精度等級 Quality grade	< JIS 5級 > < DIN 9 >
齒型 Type	斜齒Helical	壓力角 Pressure angle	20°
表面處理 Surface treatment	研磨Grinding	齒面處理 Treatment of tooth	精切削Finish cutting
熱處理 Heat treatment	齒面高週波Tooth surface induction	齒面硬度 Tooth hardness	HRC 50°~55°

MHMQ

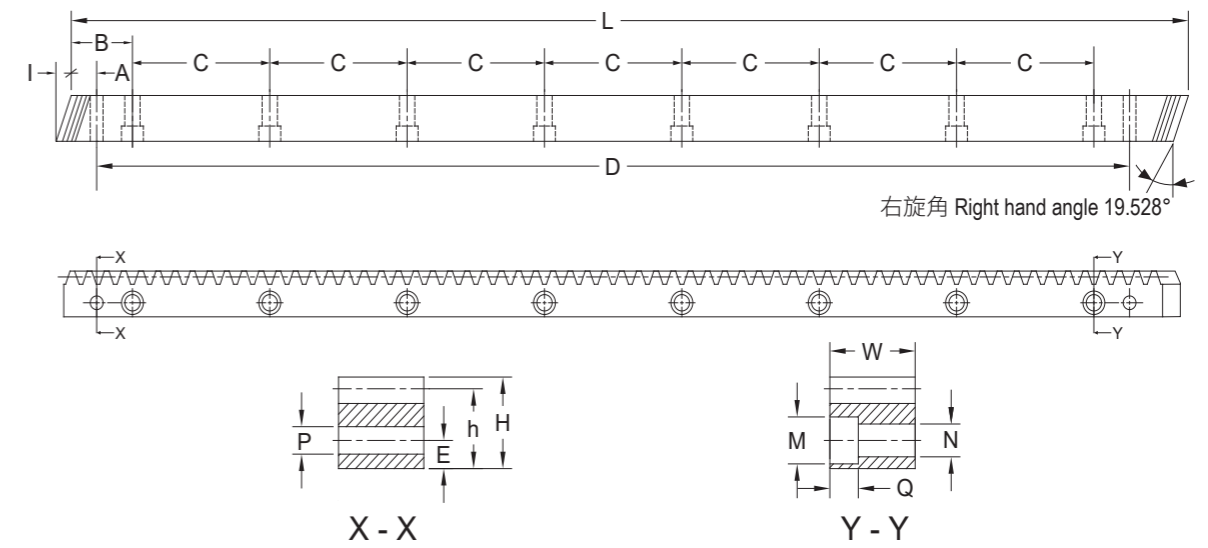


單位Dimension : mm

型號 Code	模數 Modul	L	I	齒數 Tooth No.	W	H	A	B	C	孔數 Hole No.	P	D	M	N	Q	E	h
MHMQ M01505	M1.5	500	6	100	17	17	31.7	62.5	125	4	5.7	436.6	9.5	6	7	8	15.5
MHMQ M01510	M1.5	1000	6	200	17	17	31.7	62.5	125	8	5.7	936.6	9.5	6	7	8	15.5
MHMQ M02005	M2.0	500	8.5	75	25	24	31.7	62.5	125	4	5.7	436.6	11	7	7	8	22
MHMQ M02010	M2.0	1000	8.5	150	25	24	31.7	62.5	125	8	5.7	936.6	11	7	7	8	22
MHMQ M03005	M3.0	500	10.3	50	30	29	35.0	62.5	125	4	7.7	430.0	15	10	9	9	26
MHMQ M03010	M3.0	1000	10.3	100	30	29	35.0	62.5	125	8	7.7	930.0	15	10	9	9	26
MHMQ M04005	M4.0	506.67	13.8	38	40	39	33.3	62.5	125	4	7.7	433.0	15	10	9	12	35
MHMQ M04010	M4.0	1000	13.8	75	40	39	33.3	62.5	125	8	7.7	933.4	15	10	9	12	35
MHMQ M05005	M5.0	500	17.4	30	49	39	37.5	62.5	125	4	11.7	425.0	20	14	13	12	34
MHMQ M05010	M5.0	1000	17.4	60	49	39	37.5	62.5	125	8	11.7	925.0	20	14	13	12	34
MHMQ M06005	M6.0	500	20.9	25	59	49	37.5	62.5	125	4	15.7	425.0	26	18	17	16	43
MHMQ M06010	M6.0	1000	20.9	50	59	49	37.5	62.5	125	8	15.7	925.0	26	18	17	16	43
MHMQ M08005	M8.0	480	28.0	18	79	79	120	60.0	120	4	19.7	240.0	33	22	21	25	71
MHMQ M08010	M8.0	960	28.0	36	79	79	120	60.0	120	8	19.7	720.0	33	22	21	25	71

材質 Material	紅十字SCM440	精度等級 Quality grade	< JIS 4級 > < DIN 8 >
齒型 Type	斜齒Helical	壓力角 Pressure angle	20°
表面處理 Surface treatment	精切削Finish cutting	齒面處理 Treatment of tooth	精切削Finish cutting
熱處理 Heat treatment	調質Quenched	齒面硬度 Tooth hardness	HRC 18°~22°

MHMQG



單位Dimension : mm

型號 Code	模數 Modul	L	I	齒數 Tooth No.	W	H	A	B	C	孔數 Hole No.	P	D	M	N	Q	E	h
MHMQG M01505	M1.5	500	6	100	17	17	31.7	62.5	125	4	5.7	436.6	9.5	6	7	8	15.5
MHMQG M01510	M1.5	1000	6	200	17	17	31.7	62.5	125	8	5.7	936.6	9.5	6	7	8	15.5
MHMQG M02005	M2.0	500	8.5	75	25	24	31.7	62.5	125	4	5.7	436.6	11	7	7	8	22
MHMQG M02010	M2.0	1000	8.5	150	25	24	31.7	62.5	125	8	5.7	936.6	11	7	7	8	22
MHMQG M03005	M3.0	500	10.3	50	30	29	35.0	62.5	125	4	7.7	430.0	15	10	9	9	26
MHMQG M03010	M3.0	1000	10.3	100	30	29	35.0	62.5	125	8	7.7	930.0	15	10	9	9	26
MHMQG M04005	M4.0	506.67	13.8	38	40	39	33.3	62.5	125	4	7.7	433.0	15	10	9	12	35
MHMQG M04010	M4.0	1000	13.8	75	40	39	33.3	62.5	125	8	7.7	933.4	15	10	9	12	35
MHMQG M05005	M5.0	500	17.4	30	49	39	37.5	62.5	125	4	11.7	425.0	20	14	13	12	34
MHMQG M05010	M5.0	1000	17.4	60	49	39	37.5	62.5	125	8	11.7	925.0	20	14	13	12	34
MHMQG M06005	M6.0	500	20.9	25	59	49	37.5	62.5	125	4	15.7	425.0	26	18	17	16	43
MHMQG M06010	M6.0	1000	20.9	50	59	49	37.5	62.5	125	8	15.7	925.0	26	18	17	16	43
MHMQG M08005	M8.0	480	28.0	18	79	79	120	60.0	120	4	19.7	240.0	33	22	21	25	71
MHMQG M08010	M8.0	960	28.0	36	79	79	120	60.0	120	8	19.7	720.0	33	22	21	25	71

材質 Material	紅十字SCM440	精度等級 Quality grade	< JIS 3級 > < DIN 7 >
齒型 Type	斜齒Helical	壓力角 Pressure angle	20°
表面處理 Surface treatment	研磨Grinding	齒面處理 Treatment of tooth	精切削Finish cutting
熱處理 Heat treatment	調質Quenched	齒面硬度 Tooth hardness	HRC 18°~22°

硬度對照表 Steel Hardness Conversion Chart

布氏 Brinell HB	洛氏 Rockwell HRC	洛氏 Rockwell HRB	維氏 Vickers HV	布氏 Brinell HB	洛氏 Rockwell HRC	洛氏 Rockwell HRB	維氏 Vickers HV
627	60			199	15	93	199
613	59			191	14	92	197
601	58	746		190	13	92	186
592	57	727		186	12	91	184
572	56	694		183	11	90	183
552	55	649		180	10	89	180
534	54	120	589	175	9	88	178
513	53	119	567	170	7	87	175
504	52	118	549	167	6	86	172
486	51	118	531	166	5	86	168
469	50	117	505	163	4	85	162
468	49	117	497	160	3	84	160
456	48	116	490	156	2	83	158
445	47	115	474	154	1	82	152
430	46	115	458				
419	45	114	448				
415	44	114	438				
402	43	114	424				
388	42	113	406				
375	41	112	393				
373	40	111	388				
360	39	111	376				
348	38	110	361				
341	37	109	351				
331	36	109	342				
322	35	108	332				
314	34	108	320				
308	33	107	311				
300	32	107	303				
290	31	106	292				
277	30	105	285				
271	29	104	277				
264	28	103	271				
262	27	103	262				
255	26	102	258				
250	25	101	255				
245	24	100	252				
240	23	100	247				
233	22	99	241				
229	21	98	235				
223	20	97	227				
216	19	96	222				
212	18	95	218				
208	17	95	210				

各家材料與儀器不同,數據僅供參考。
Since all materials and testing instruments are different, All values are for reference only.

齒距與模數轉換表 Conversion table gear pitch and module

Module	Diametral Pitch	Circular Pitch (CP)		Module	Diametral Pitch	Circular Pitch (CP)		Module	Diametral Pitch	Circular Pitch (CP)	
M	DP	in	mm	M	DP	in	mm	M	DP	in	mm
25.4000	1	3.1416	79.7966	8.4667	3	1.0472	26.5989	2.3873	10.6395	0.2953	7.4999
25.2658	1.0053	3.1250	79.3750	8.2761	3.0691	1.0236	26.0001	2.3091	11	0.2856	7.2542
25	1.0160	3.0921	78.5400	8.0851	3.1416	1	25.4001	2.2500	11.2889	0.2783	7.0686
24.2552	1.0472	3	76.2000	8	3.1750	0.9895	25.1328	2.2282	11.3995	0.2756	7.0001
24	1.0583	2.9684	75.3984	7.9577	3.1919	0.9843	24.9999	2.1167	12	0.2618	6.6498
23.8732	1.0640	2.9528	75	7.8154	3.2500	0.9666	24.5528	2.0690	12.2764	0.2559	6.4999
23.2446	1.0927	2.8750	73.0252	7.6394	3.3249	0.9449	23.9999	2.0213	12.5664	0.2500	6.3501
22.2817	1.1399	2.7559	70	7.5798	3.3510	0.9375	23.8126	2	12.7000	0.2474	6.2832
22.2339	1.1424	2.7500	69.8500	7.2571	3.5000	0.8976	22.7989	1.9538	13	0.2417	6.1380
22	1.1545	2.7211	69.1152	7.0744	3.5904	0.8750	22.2249	1.9099	13.2994	0.2362	6.0001
21.2233	1.1968	2.6250	66.6751	7.0028	3.6271	0.8661	21.9999	1.8143	14	0.2244	5.6998
20.6901	1.2276	2.5591	65.0000	7	3.6286	0.8658	21.9912	1.7507	14.5084	0.2165	5.4999
20.3200	1.2500	2.5133	63.8373	6.7733	3.7500	0.8378	21.2789	1.7500	14.5143	0.2164	5.4978
20.2127	1.2566	2.5000	63.5000	6.5691	3.8666	0.8125	20.6374	1.6933	15	0.2094	5.3196
20	1.2700	2.4737	62.8320	6.3662	3.9898	0.7874	20	1.5915	15.9593	0.1969	4.9998
19.2020	1.3228	2.3750	60.3250	6.3500	4	0.7854	19.9491	1.5875	16	0.1963	4.9872
19.0986	1.3299	2.3622	60	6.0638	4.1888	0.7500	19.0500	1.5160	16.7552	0.1875	4.7626
18.1914	1.3963	2.2500	57.1501	6.0479	4.1998	0.7480	19	1.5	16.9333	0.1855	4.7124
18	1.4111	2.2263	56.5488	6	4.2333	0.7421	18.8496	1.4324	17.7325	0.1772	4.5000
17.5070	1.4508	2.1654	55	5.7296	4.4331	0.7087	18.0001	1.4111	18	0.1745	4.4331
17.1808	1.4784	2.1250	53.9752	5.6444	4.5000	0.6981	17.7324	1.2732	19.9491	0.1575	3.9998
16.9333	1.5	2.0944	53.1976	5.5585	4.5696	0.6875	17.4625	1.2700	20	0.1571	3.9898
16.1701	1.5708	2	50.8000	5.5000	4.6182	0.6803	17.2788	1.25	20.3200	0.1546	3.9270
16	1.5875	1.9790	50.2656	5.4113	4.6939	0.6693	17.0001	1.1141	22.7990	0.1378	3.5001
15.9155	1.5959	1.9685	50	5.0930	4.9873	0.6299	16.0001	1.0583	24	0.1309	3.3247
15.1595	1.6755	1.8750	47.6250	5.0800	5	0.6283	15.9593	1.0160	25	0.1257	3.1918
15	1.6933	1.8553	47.1240	5.0532	5.0265	0.6250	15.8751	1.0106	25.1327	0.1250	3.1749
14.5143	1.7500	1.7952	45.5981	5	5.0800	0.6184	15.7080	1	25.4000	0.1237	3.1416
14.3239	1.7733	1.7717	45	4.7746	5.3198	0.5906	14.9998	0.9549	26.5988	0.1181	2.9999
14.1489	1.7952	1.7500	44.4501	4.6182	5.5000	0.5712	14.5079	0.9071	28	0.1122	2.8497
14	1.8143	1.7316	43.9824	4.5479	5.5851	0.5625	14.2876	0.8467	30	0.1047	2.6599
13.1382	1.9333	1.6250	41.2749	4.5000	5.6444	0.5566	14.1372	0.8085	31.4159	0.1000	2.5399
13	1.9538	1.6079	40.8408	4.4563	5.6997	0.5512	13.9999	0.8	31.7500	0.0989	2.5132
12.7324	1.9949	1.5748	40.0001	4.2333	6	0.5236	13.2993	0.7958	31.9186	0.0984	2.5000
12.7000	2	1.5708	39.8983	4.1380	6.1382	0.5118	12.9999	0.7938	32	0.0982	2.4938
12.1276	2.0944	1.5000	38.1000	4.0425	6.2832	0.5000	12.6999	0.7500	33.8667	0.0928	2.3562
12.0958	2.0999	1.4961	38.0001	4	6.3500	0.4947	12.5664	0.7056	36	0.0873	2.2167
12	2.1167	1.4842	37.6992	3.9077	6.5000	0.4833	12.2764	0.7	36.2857	0.0866	2.1991
11.6223	2.1855	1.4375	36.5126	3.8197	6.6497	0.4724	11.9999	0.6684	38	0.0827	2.0998
11.4592	2.2166	1.4173	36.0002	3.6286	7	0.4488	11.3996	0.6366	39.8982	0.0787	1.9999
11.2889	2.2500	1.3963	35.4652	3.5372	7.1808	0.4375	11.1124	0.6350	40	0.0785	1.9949
11.1170	2.2848	1.3750	34.9251	3.5014	7.2542	0.4331	10.9999	0.6	42.3333	0.0742	1.8849
11	2.3091	1.3605	34.5576	3.5000	7.2571	0.4329	10.9956	0.5292	48	0.0654	1.6625
10.8225	2.3470	1.3386	33.9999	3.1831	7.9796	0.3937	10	0.5080	50	0.0628	1.5959
10.6117	2.3936	1.3125	33.3377	3.1750	8	0.3927	9.9745	0.5053	50.2655	0.0625	1.5874
10.1859	2.4936	1.2598	32	3.0319	8.3776	0.3750	9.5250	0.5	50.8000	0.0618	1.5708
10.1600	2.5000	1.2566	31.9186	3.0239	8.3996	0.3740	9.4998	0.4775	53.1976	0.0591	1.5001
10.1063	2.5133	1.2500	31.7499	3	8.4667	0.3711	9.4248	0.4	63.5000	0.0495	1.2566
10	2.5400	1.2368	31.4160	2.8648	8.8663	0.3543	9	0.3969	64	0.0491	1.2469
9.6010	2.6456	1.1875	30.1625	2.8222	9	0.3491	8.8662	0.3528	72	0.0436	1.1083
9.5493	2.6599	1.1811	30	2.7500	9.2364	0.3401	8.6394	0.3183	79.7965	0.0394	0.9999
9.2364	2.7500	1.1424	29.0170	2.7056	9.3878	0.3346	8.4999	0.3175	80	0.0393	0.9974
9.0957	2.7925	1.1250	28.5750	2.5465	9.9746	0.3150	8	0.3	84.6667	0.0371	0.9424
9	2.8222	1.1132	28.2744	2.5400	10	0.3142	7.9796	0.2646	96	0.0327	0.8312
8.9127	2.8499	1.1024	28.0001	2.5266	10.0531	0.3125	7.9375	0.2117	120	0.0262	0.6650
8.5904	2.9568	1.0625	26.9876	2.5	10.1600	0.3092	7.8540	0.2	127	0.0247	0.6283

您的託付是我們的堅持
Your trust is our persistence



台中市霧峰區六股路187-9號
TEL : 04-2330 3233 FAX : 04-2330 3250
E MAIL : Hojan.Rack@gmail.com